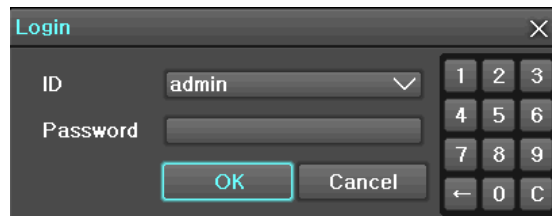


1. System Login

1.1. User Login

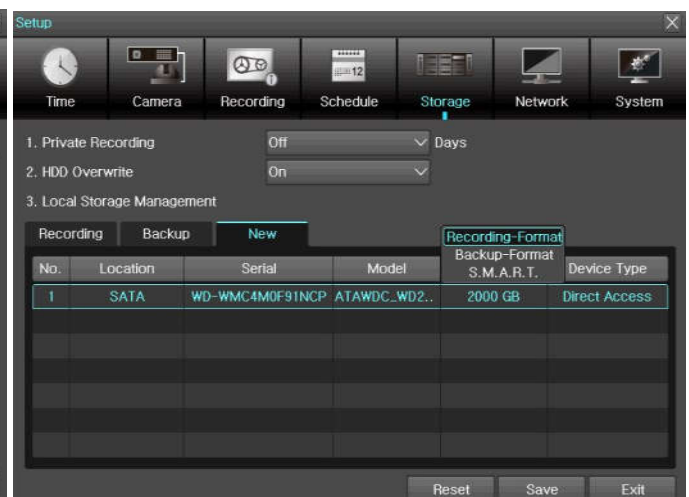
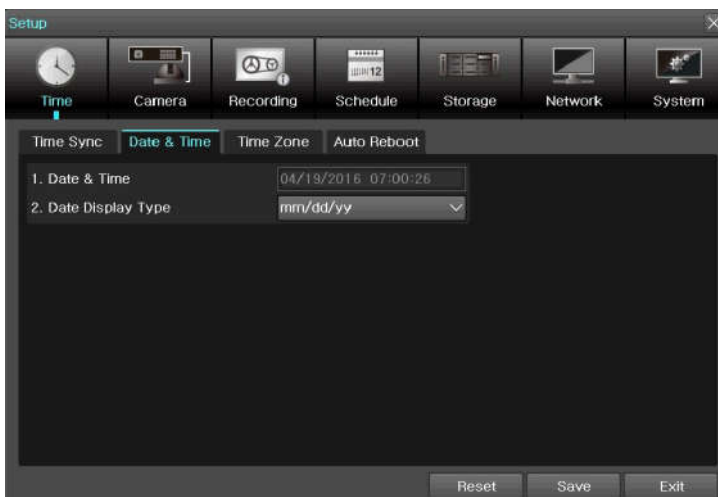


Default admin password: 00000

1.2. Time Setting and HDD Format

Go to **[{Menu} → {Setup} → {Time}]** and input the proper time/date setting based on your time zone. Daylight Savings for the UK should be enabled for the last Sunday of March and October.

If you have installed your own HDD, it must be formatted first. Go to **[{Menu} → {Setup} → {Storage}]** and select the HDD for Recording-Format



1.3. Recording Setting

Recording setting is to help user for easy configuration for recording resolution, recording speed, recording mode and recording quality.

Select [{Menu} → {Setup} → {Recording} → {Recording}].



Recording Type

Recording Type	Description
Continuous	The DVR records non-stop at the specified frame rate
Motion	When motion is detected, th
Sensor	When input signal from an external sensor is generated, the recording will be initiated based on the event frame value.
Audio	When audio is detected, the recording will be initiated based on the event frame value.

Recording Status View

Recording Status by Colour

※ Recording Event / Recording Mode Icon ※		
Recording Event	M	Motion Detection Recording
	A	Audio Recording
	S	Sensor Recording
Recording Mode	V	Video Recording
	A	Audio Recording

2. System Operation

2.1. Using Tool (Control) Bar

※ Control Bar ※

①	Full Screen
②	4 Channel Screen
③	Auto Sequence Mode
④	Digital Zoom
⑤	Date / Time
⑥	HDD Status
⑦	Playback

2.2. Display Mode

User can select display mode by using tool bar or pop-up menu. The images can be seen on real-time speed by 1, 4, 6, 9 split screen.

※ Recording Event / Recording Mode Icon ※	
Recording Event	Motion Detection Recording
	Audio Recording
	Sensor Recording
Recording Mode	Video Recording
	Audio Recording
※ Live Screen Icon ※	
	Video is not connected.
No Signal	Camera has been disconnected.

2.3. Using Main Menu

Menu window pops up by clicking the right button of the mouse or pressing [MENU] button on the front panel.



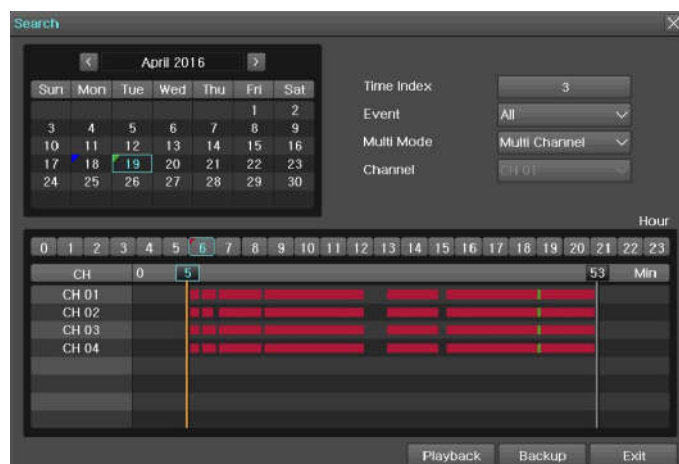
- **Setup**
Select Time / Camera / Recording / Schedule / Storage / Network / System
- **Search**
Search the recorded image
- **Backup**
Backup the recorded file
- **PTZ Control**
Control PTZ
- **Zoom**
Control Zoom
- **Miscellaneous**
DVR Info. / Log Viewer / Misc. Control / Display Setting / System Shutdown

2.4. Search Mode

User can click the Search icon on the Menu Bar to search the recorded image by selecting date & time on the calendar.

User can click the Playback icon to playback.

Calendar Search
 Go To The Time
 Go To The Last
 Go To The First
 Go To The Last Play Time



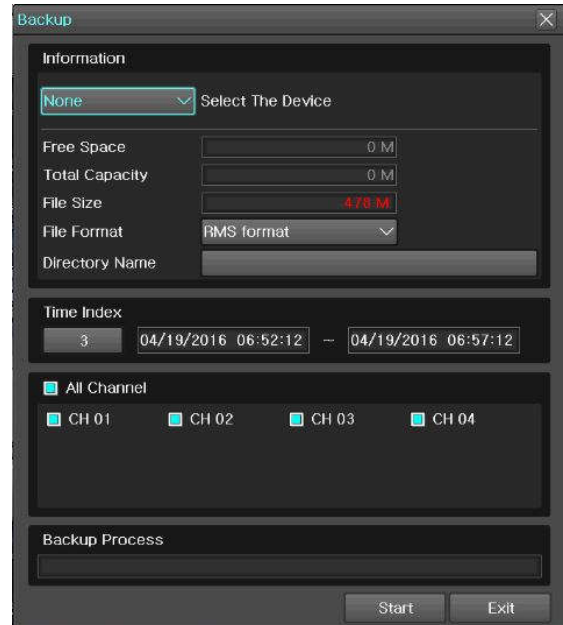
2.5. Backup Mode

User can easily backup the video image.

Click on the Backup icon on the Menu Bar.

The backup window will be displayed, then, select backup media such as CD/DVD or USB thumb drive and select time and channel to be recorded.

Execute the backup.



3. Network Setting

3.1. Static IP

Go to the menu of [Menu] → Setup → Network → Ethernet and check TCP/IP and input IP Address, Subnet Mask, Default Gateway.

3.2. Dynamic IP (auto-assigned)

Go to the menu of [Menu] → Setup → Network → Ethernet and check DHCP. Go to the menu of [Menu] → Setup → Network → DDNS and select DDNS Enable: PowerDDNS

3.3.1 Automatic Port Forwarding

Go to the menu of [Menu] → Setup → Network → Ethernet and enter settings as per 3.1 or 3.2 above. Scroll down and turn on 'Auto Port Forwarding'. If the message returned after 20 seconds is 'Registered', you are ready to connect. If it shows 'Failed', follow advice in 3.3.2 below.

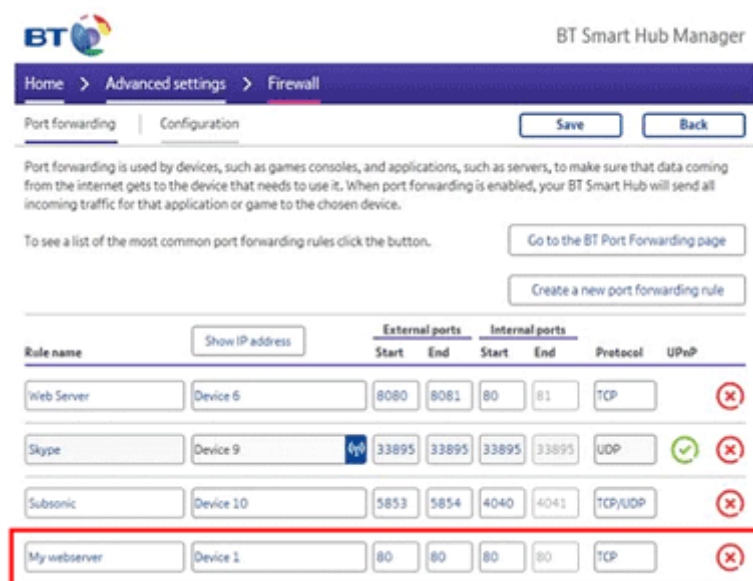


3.3.2 Port Forwarding setup on your router

From a web browser, login to your router's configuration page. E.g.

- BT <http://192.168.1.254>
- Sky or Virgin Media <http://192.168.0.1>
- Others Check your ISP website for help

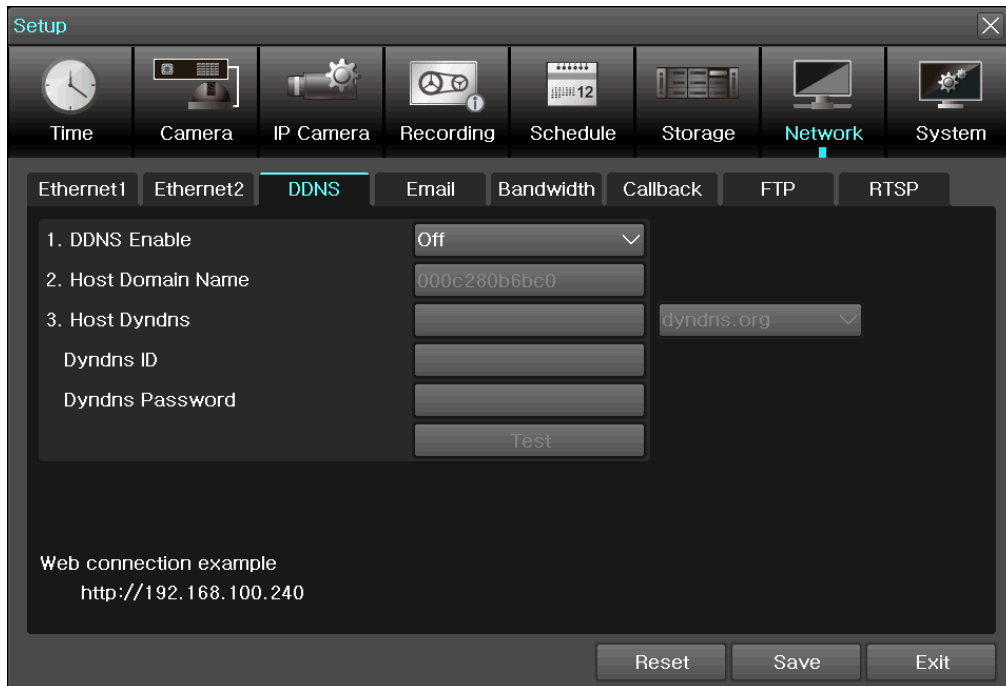
You will need to enter the Firewall settings, also sometimes referred to as NAT, Port Forwarding or Virtual Servers. Create an inbound forwarding rule for TCP port 80 and TCP port 50100 and forward these to the IP address of the DVR, as seen in the Ethernet menu. For specific instructions for your particular router, see the website of your Internet Service Provider.



3.3.3 DDNS Setting

Go to the menu of **[Menu] → {Setup} → {Network} → {DDNS}** and select

DDNS Enable to PowerDDNS and input Host Domain Name of your choice, or keep the default setting. Dyndns ID is only required when using the paid-for service from dyn.com.

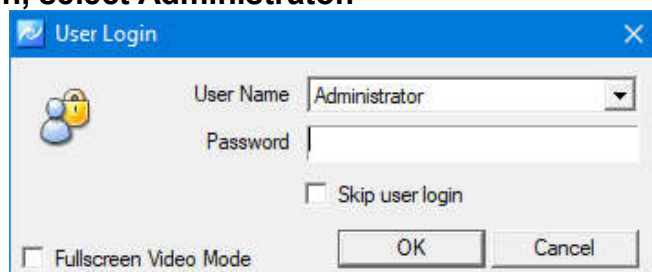


4 VMS (Video Monitoring Software)

VMS (Video Monitoring Software) is a powerful centralized management solution that offers user full flexibility to control the entire system over the network, consists of 5 function modules: System Monitoring; Remote Search & PB; Smart Search & Watermark detect; DVR Health Manager; System setup configuration.

4.1. System Login

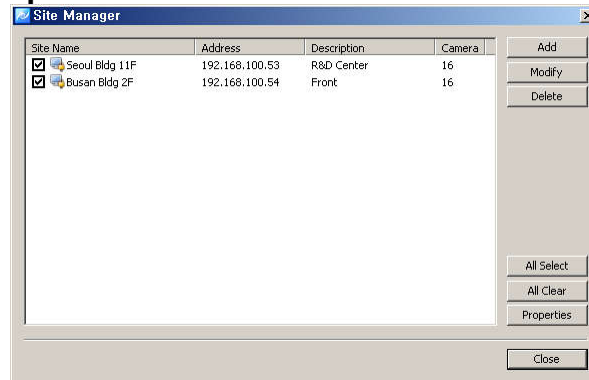
- 1) In the start menu, type 'VMS' or double click the icon on your desktop
- 2) Select one of the names of registered users in the login window. For first time login, select Administrator.



- 3) The default password is '1111111' (seven ones). You can select 'Skip user login' so you are not prompted for this password again.

4.2. Site Registration

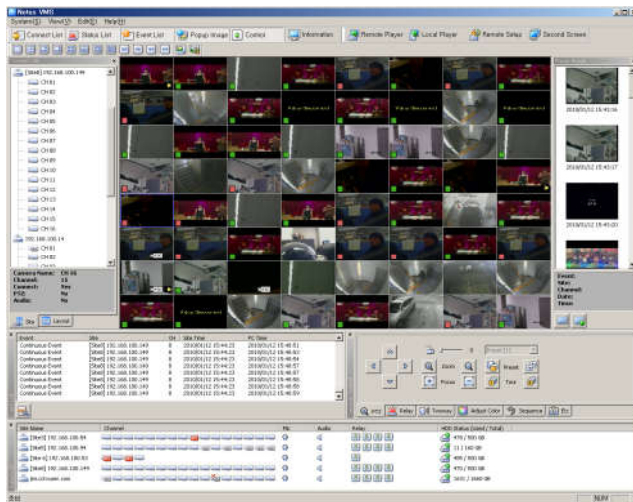
- 1) Select 'Setup'-'>'Site Manager' menu.
- 2) In Site Manager, functions including site add, delete, modify, all select, all clear and properties are available.



- 3) Click on 'Add' and enter a security device name, description, connect address and port.

Item	Description
Name	Name of the security device to be used in the program
Description	Description of the security device
Connect Address	Network address of the security device
Port	Network port no. of the security device
Camera Count	The number of cameras connected to the security device
User Name	User name registered in the security device
Password	Password registered in the security device

- 4) VMS program automatically starts a connection to ticked addresses in Site Manager after successful login.
- 5) In Site Connection List, select a desired security device icon to be monitored.
- 6) Drag the icon into the viewer screen, and then all channel of the security device are displayed.

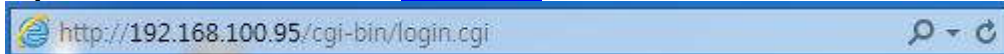


5 PC Web Viewer and DVR Web Service

[DVR Web Service] through the Ethernet/Port setup and web server composition. The main purpose of DVR WEB SERVICE is for easy setup for users to control DVR setup and live view by WEB easily.

Check the URL and Web port that DVR IP or DDNS is set.

Input the confirmed 'IP or [URL:Port](#)' on the web browser then enter the page.



DVR Web Service Login

ID:

Password:

Save id

Then, user can see the log-in menu as follows.

Input ID/PW for the DVR. Click the [Login] button.

*Default ID/PW: admin / 00000

6 SmartEyes Pro (mobile app)

The mobile viewer software that allows a user to view video image from the DVR on their smartphone. By installing the corresponding software on the smartphone, users can view 16 channel live video/audio, play back recordings, PTZ control, Two-way audio and relay control.

Open the App Store (on an Apple Device) or Play Store (on Android devices) and search for SmartEyesPro. The icon will look like this:



To connect your device to the DVR quickly:

1. On the DVR to go Menu > Miscellaneous > QR Code
2. In the app, tap the + icon or 'Add' button
3. Select 'QR Code Camera'
4. Raise the phone/tablet so the camera can see the QR code on screen; it will capture it automatically
5. From the list of addresses that pops up, select either the xxx.powerddns.com address or the 000c280xxxxx.p2p address
6. The connection details will be filled in automatically, press 'Done' and the system will connect.

7 Monitor output resolution

If when connecting your TV or monitor an error is shown such as 'Mode not supported' or 'Out of range', you will need to lower the resolution output. Look for the switches on the back panel of the DVR:

[IMAGE/DIAGRAM]

If you are unsure what mode your display supports, choose the XGA option. Note that the output signal doesn't change until the DVR is powered off and on again.



Refer to the [User Manual] for full functional explanation of Front Panel, Rear Panel and IR Remote Controller.



Caution

Spec and functions are subject to change without notice.
Some functions may not be available depending on models.
