

# NETUS-Pro

## Quick Setup Guide

LIVE / PLAYBACK / BACKUP / SYSTEM / E-MAP

Ver.1.1

## Contents

1. Run NETUS-Pro .....	3
2. Device Registration.....	4
3. Live .....	7
4. Add Tab Menu.....	9
5. Split Screen.....	12
6. Favorite.....	13
7. Playback.....	15
8. Back up .....	19
9. Back up to Cloud server (Directly).....	20
10. System Status.....	21
11. E-MAP.....	22

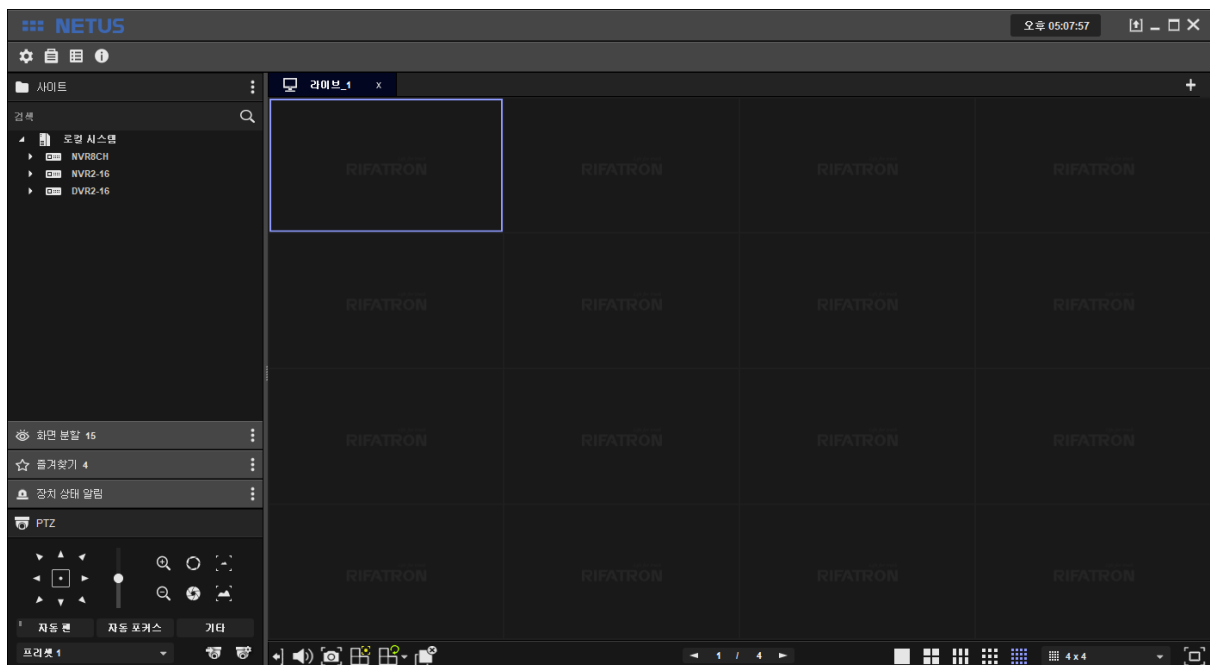
# 1. Run NETUS-Pro

Input ID / Password.



Default ID/PW: admin/1111111

Run NETUS-Pro as below.

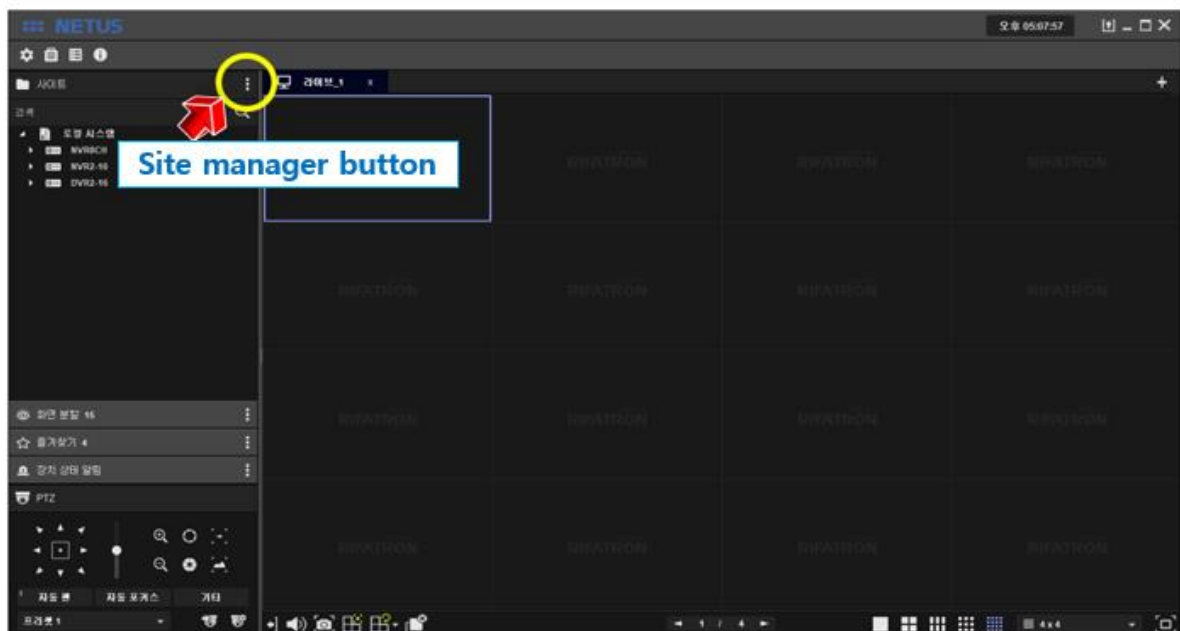


Menu commands of NETUS-Pro are as below.

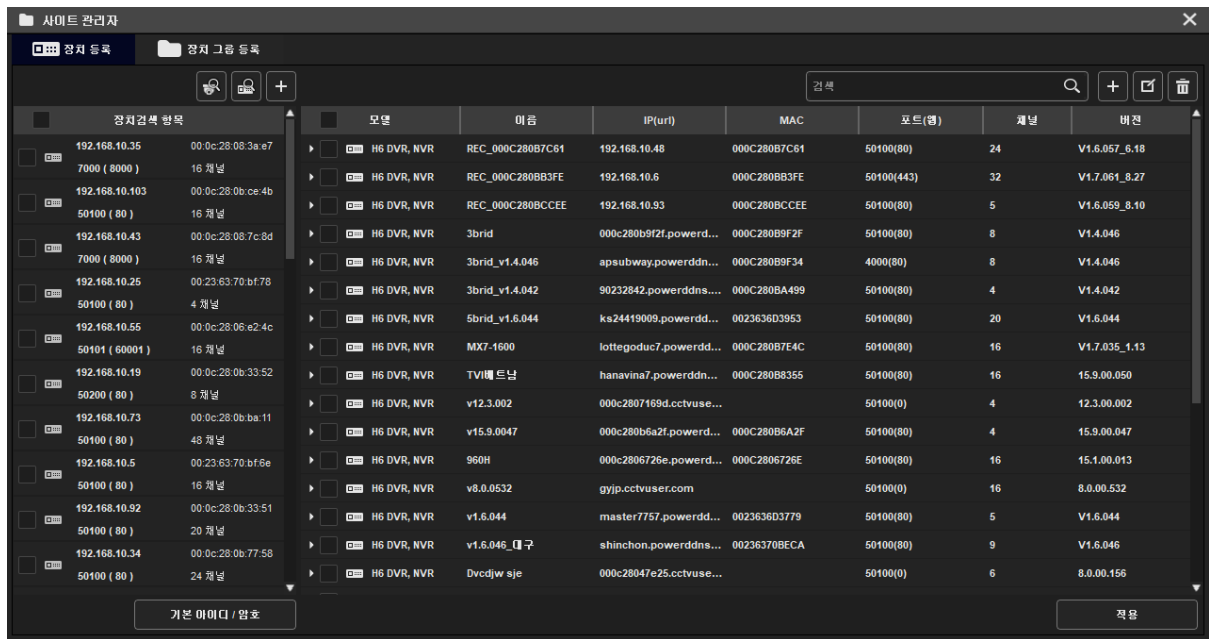




## 2. Device Registration

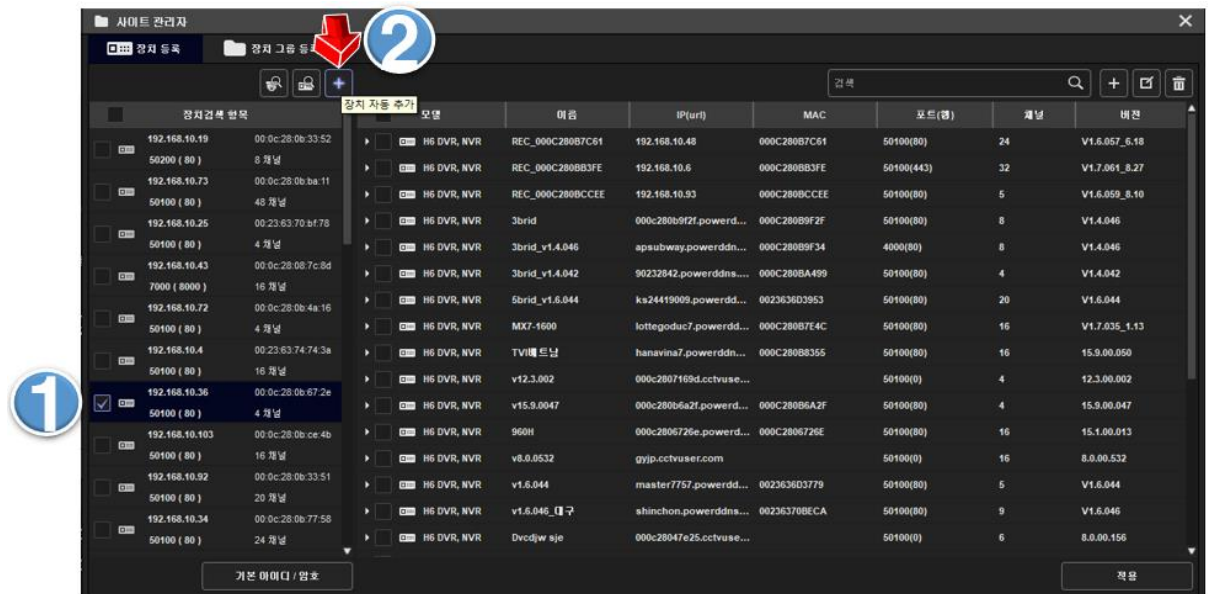
Click the yellow marked button to register device.



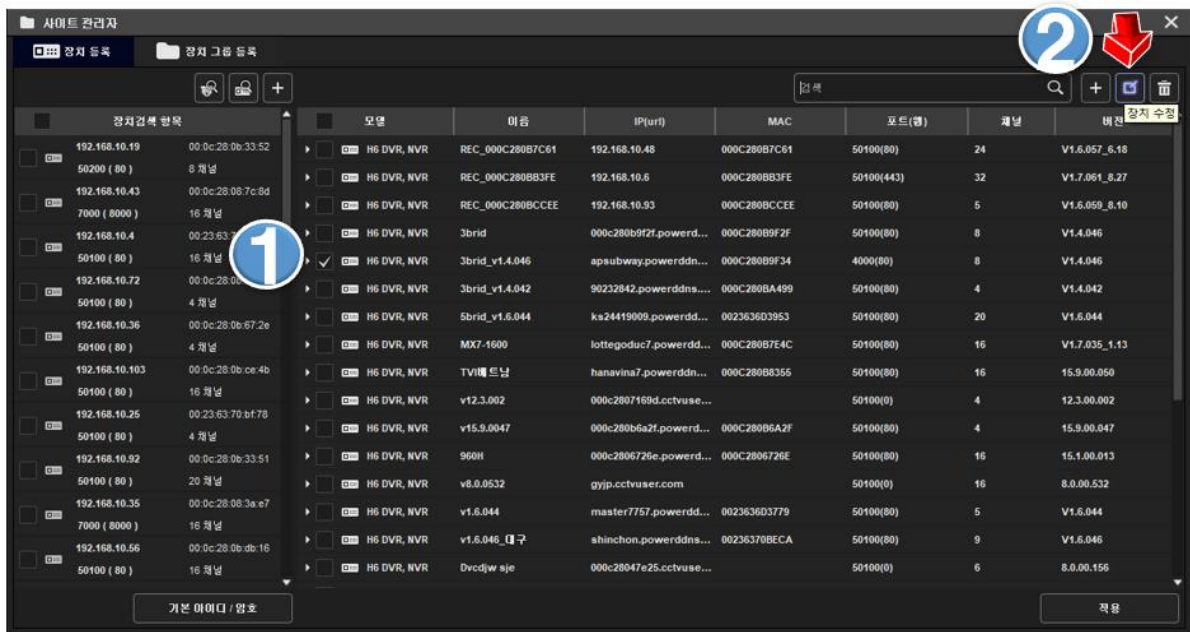
When [Site Manager] window pops up, RIFATRON DVR/NVR which is in the same band with PC is automatically searched and displayed in search list on the left.



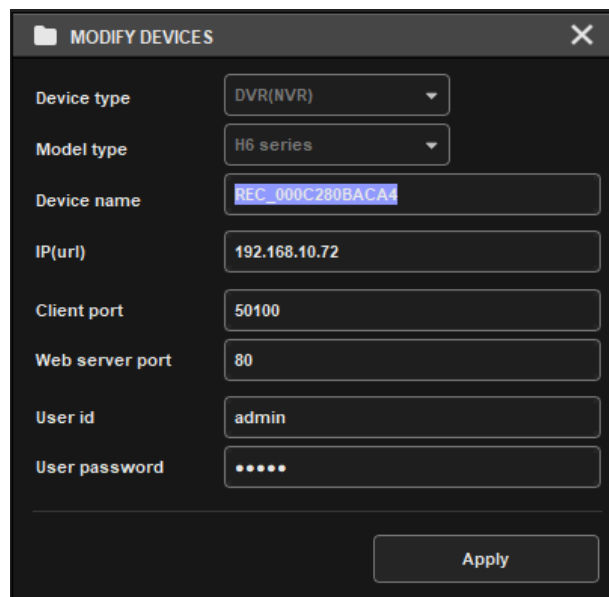
Select the device at  to register on NETUS-Pro and press  button, then it will be on the list at right side tab.



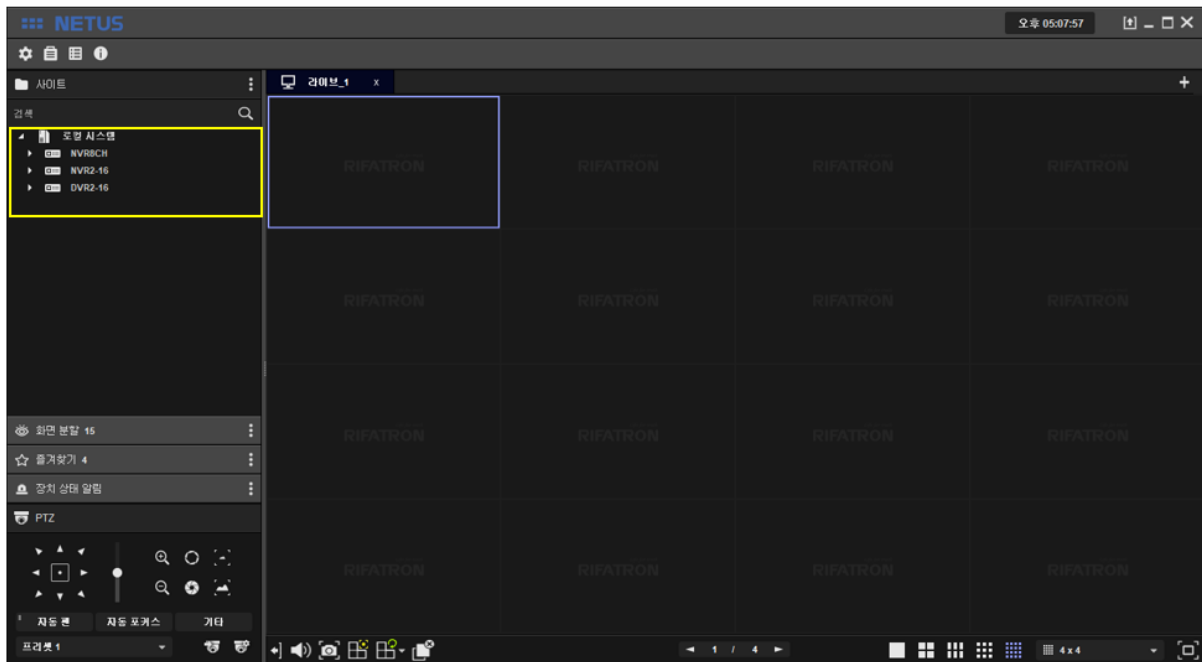
To change ID, password and settings of registered device, click 'modify devices button' on the upper right corner as below.



Then 'MODIFY DEVICES' tap pops up.

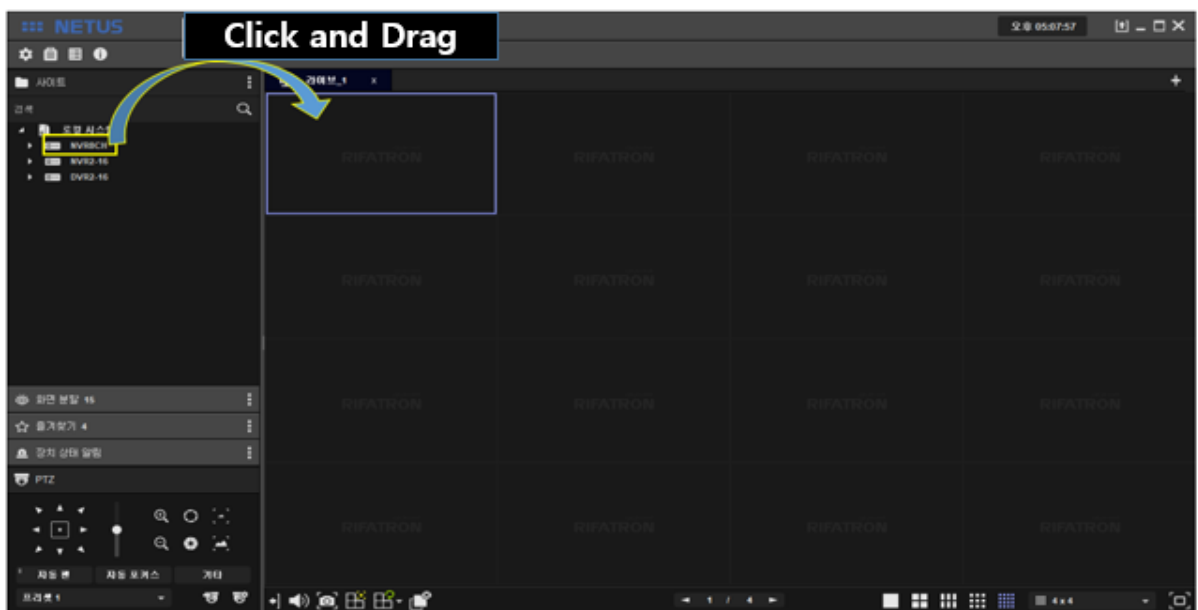


Device registration is done successfully.

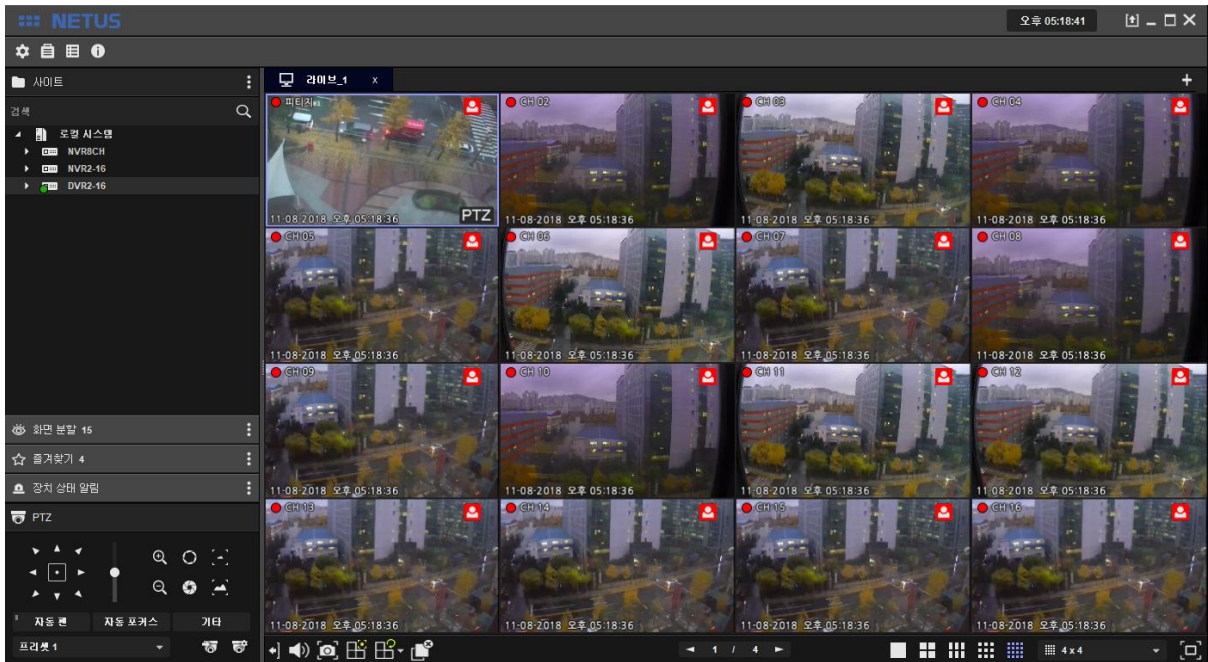



### 3. Live

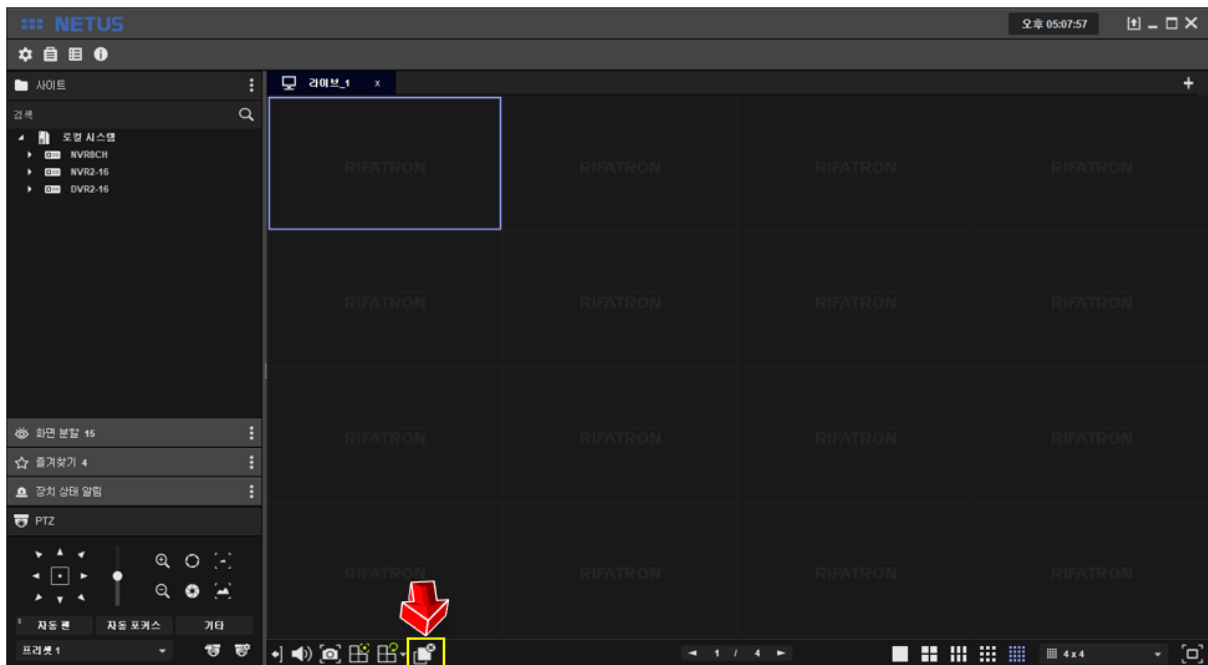
Drag and drop the mouse pointer to the display area to see all channels. Or, you can add one by one by dragging each camera.



Live images are shown as below.




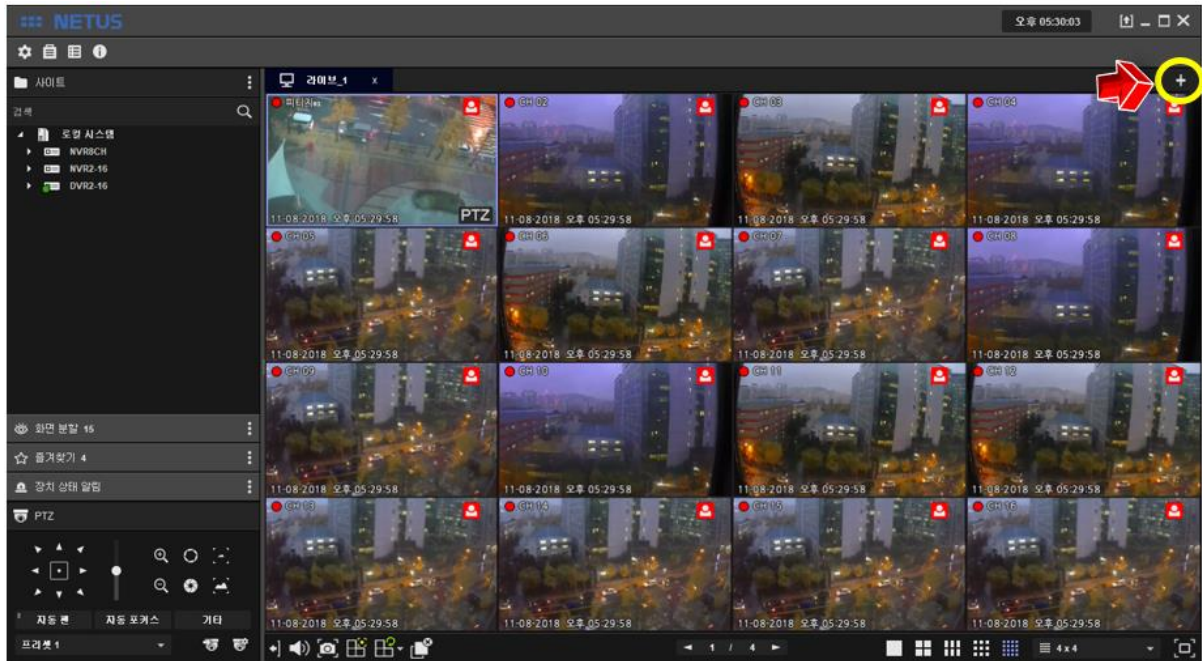
You can stop the display by pressing  button below.




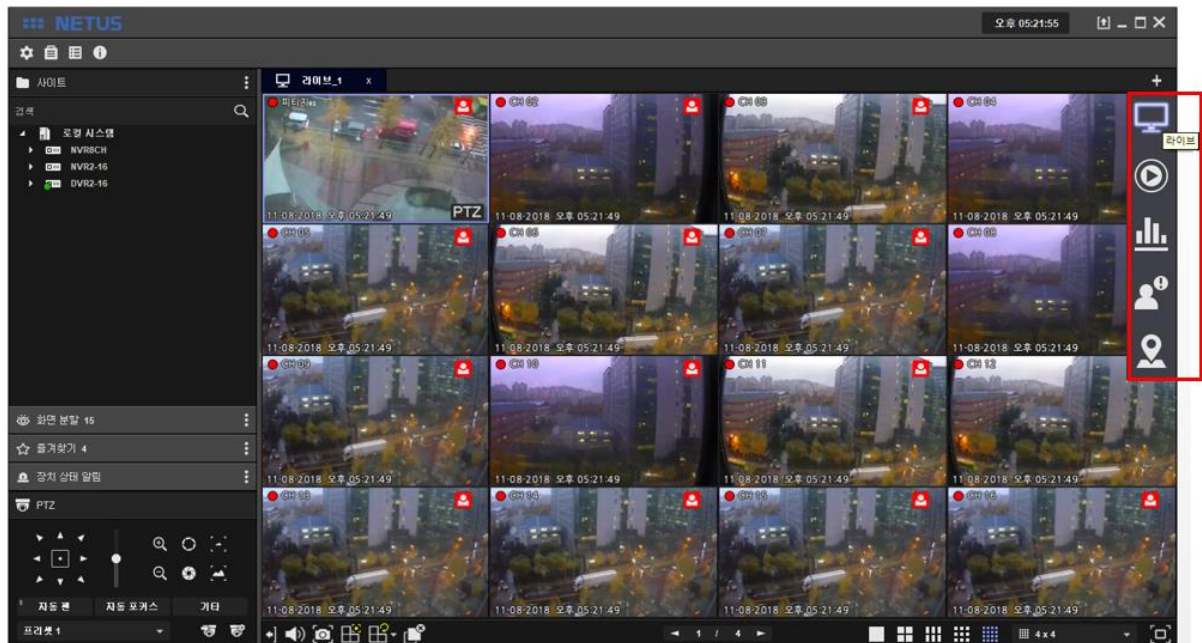


## 4. Add Tab Menu

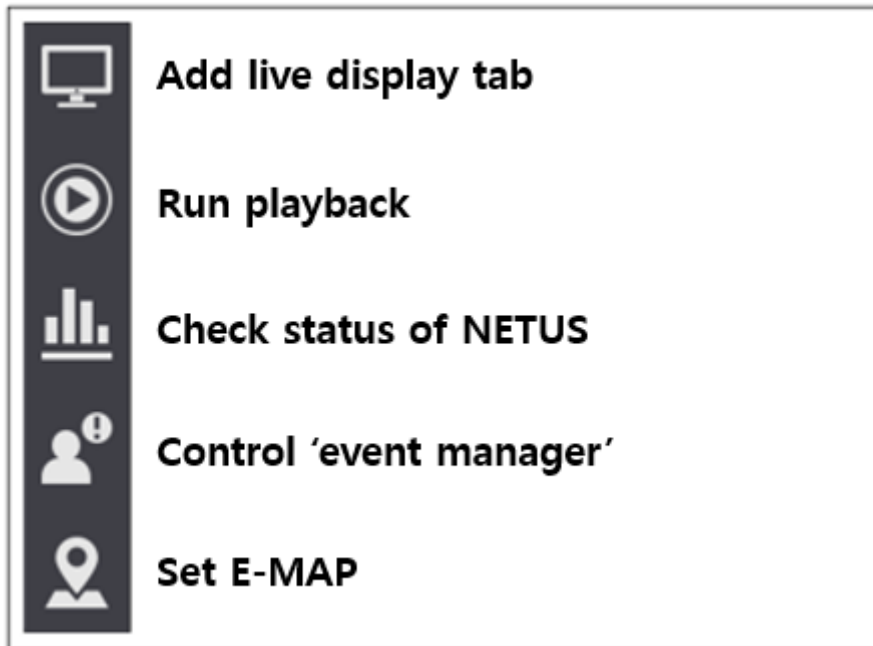
The image display tab can be added with  button below.



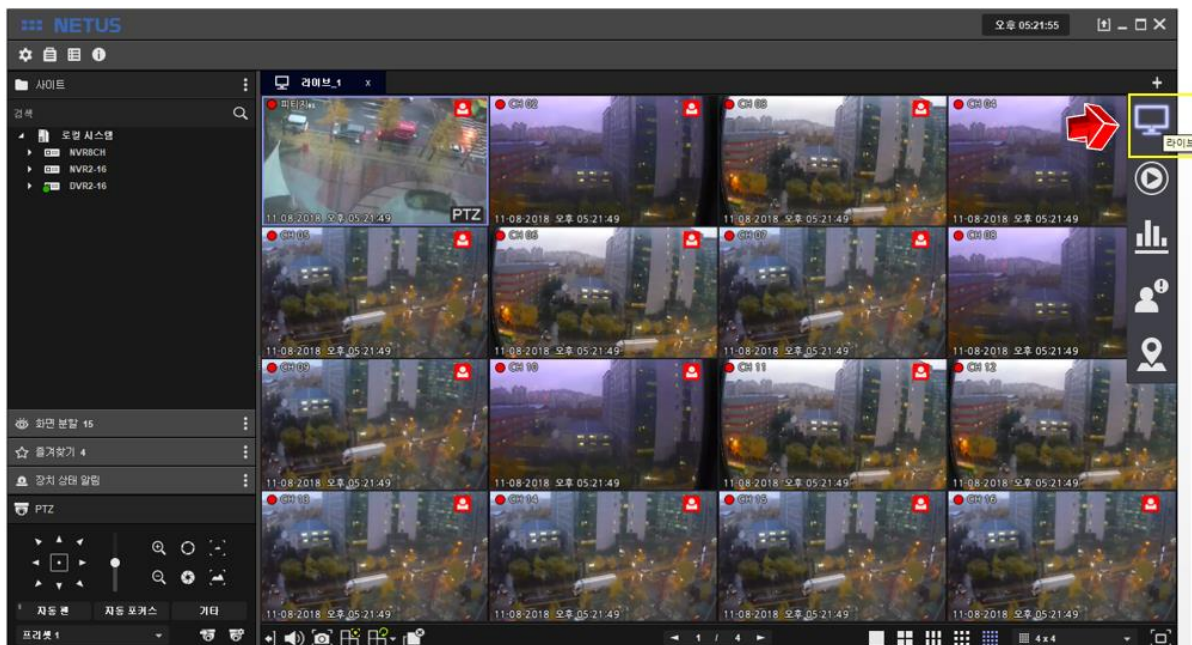
Menu bar comes out on the right side when you press  tab add button.



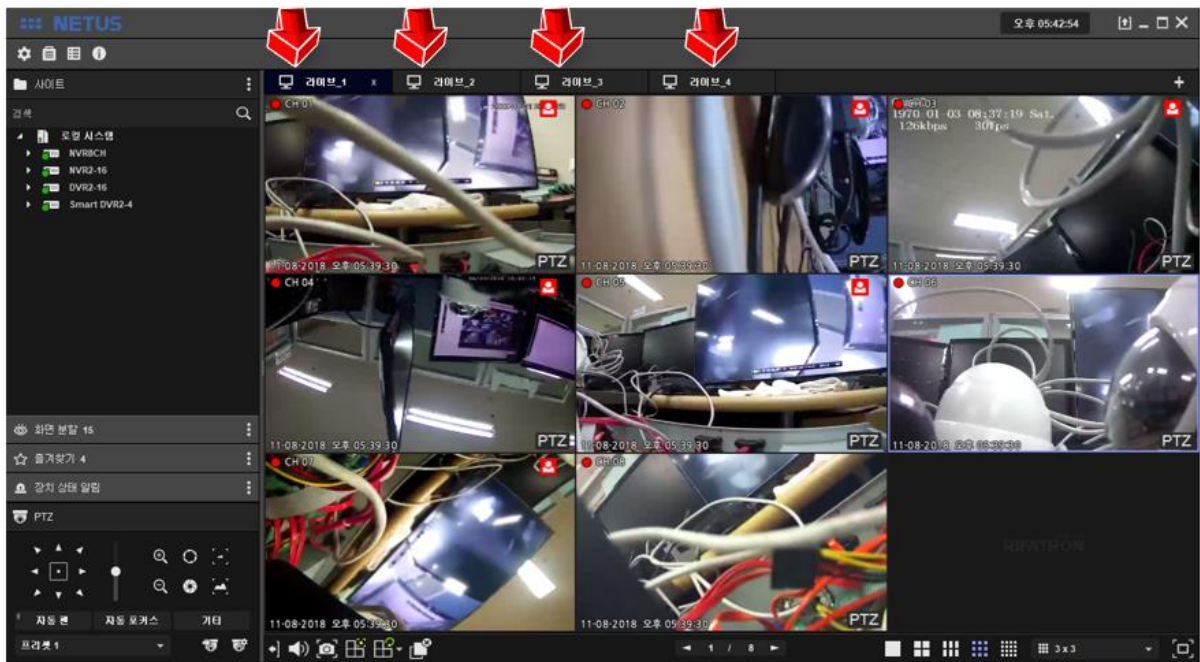
Each items on menu tab have functions as below.



If you want to add live tab, click the live button  on  tab of the right side then live tab comes out as below.




Drag another device to another tab if you want to add it. Live tab can be added maximum 4.



You can separate each display tab by dragging tab name.





## 5. Split Screen

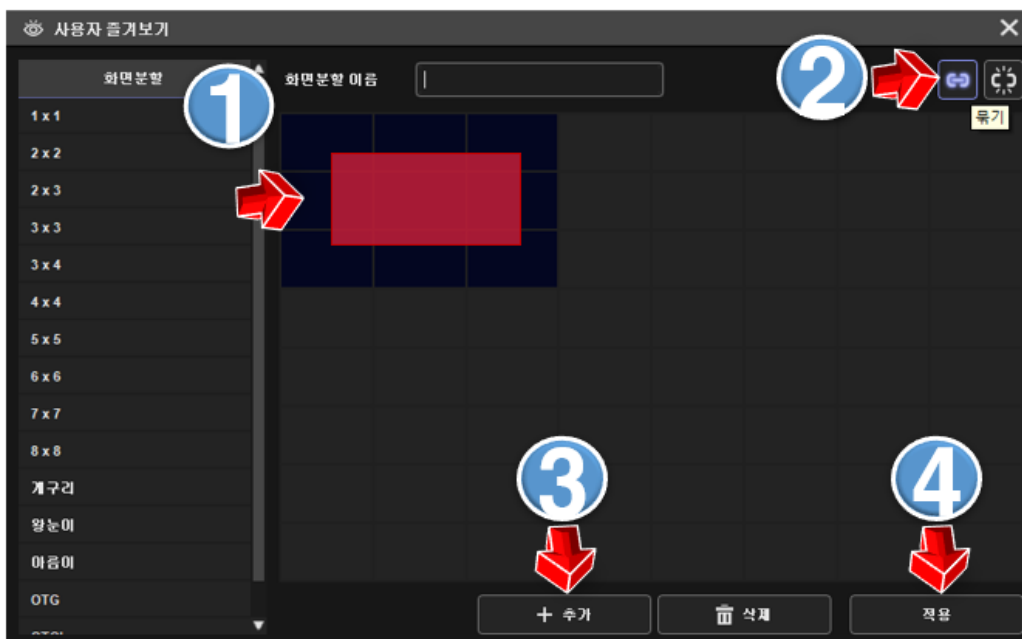
Click  button to split screen..



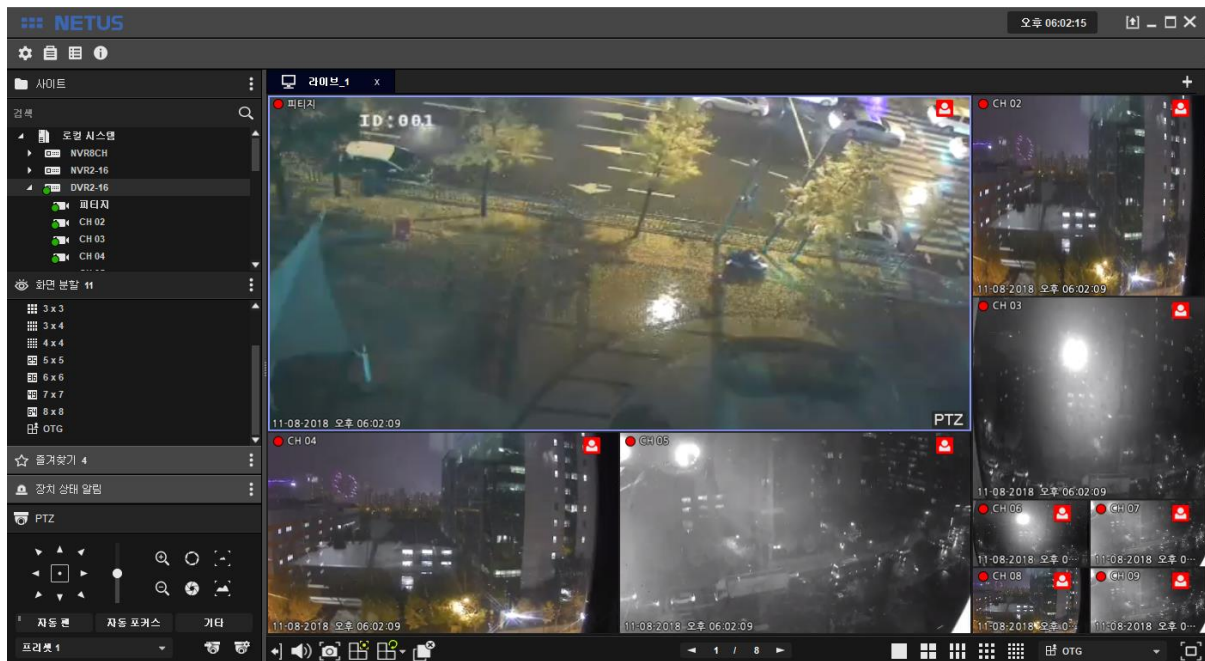
Setting window to split screen has 8x8 cell. Set the size of this cell as you want.

Bind them with button 2  and repeat this setting.

Click button 3  once your settings are done and apply setting with button 4 .

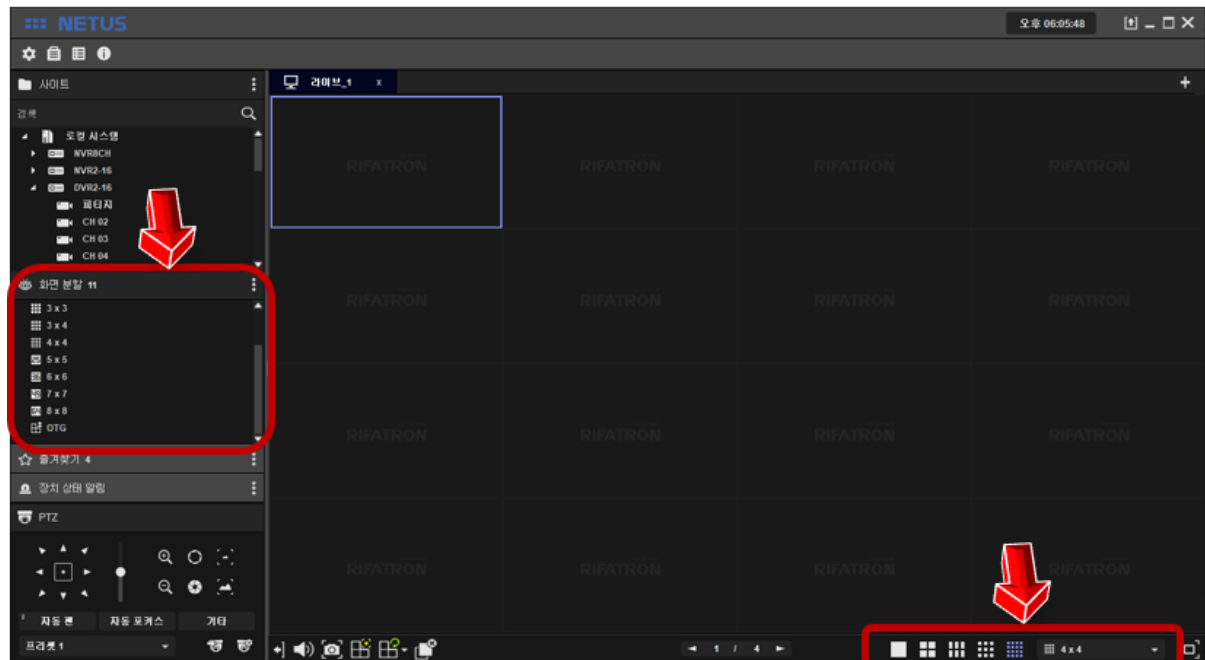


Then you can adjust size of each channel's display as you want.



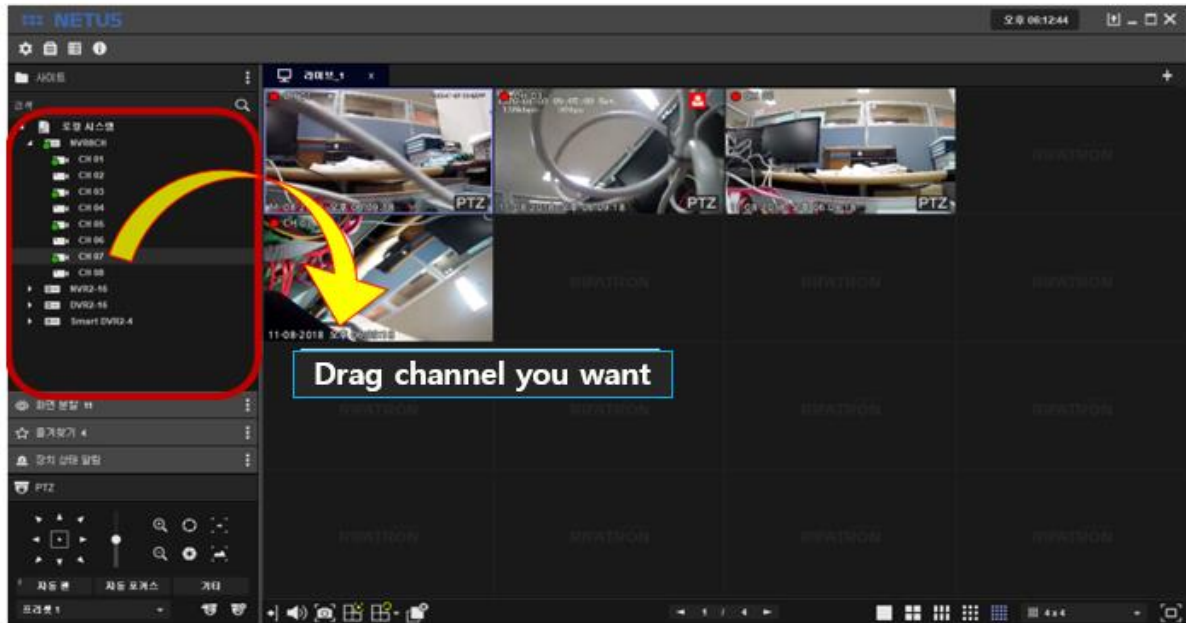
## 6. Favorite

Select display mode to set 'favorite' at side menu or bottom menu.



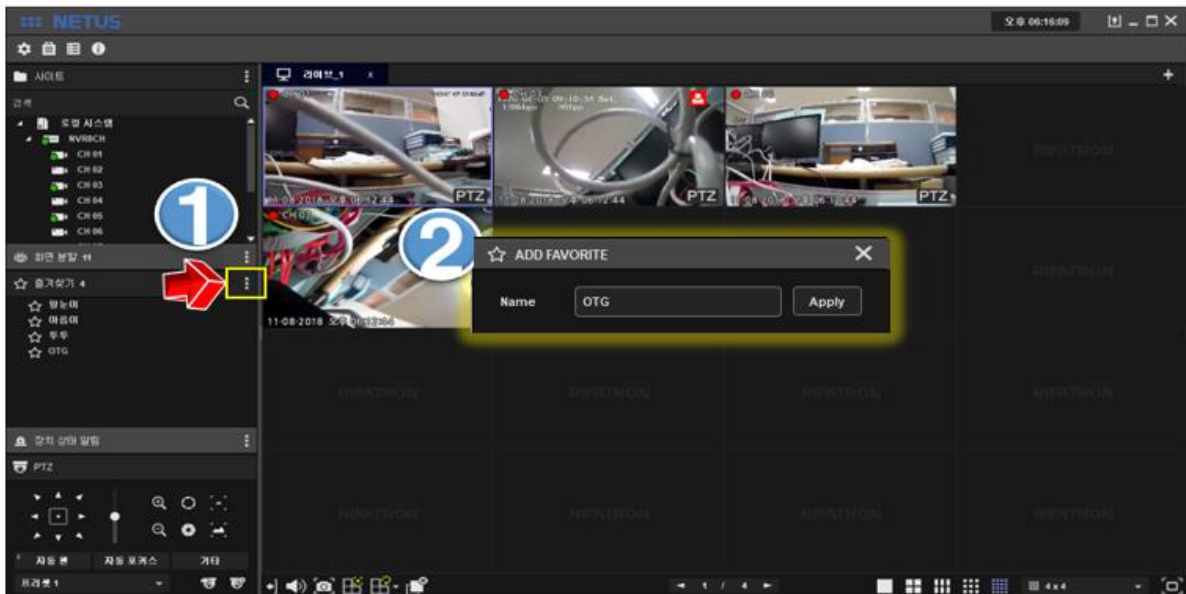
Drag channels you want to add favorite and put them to the display.

The picture below is to drag only odd number of channels.





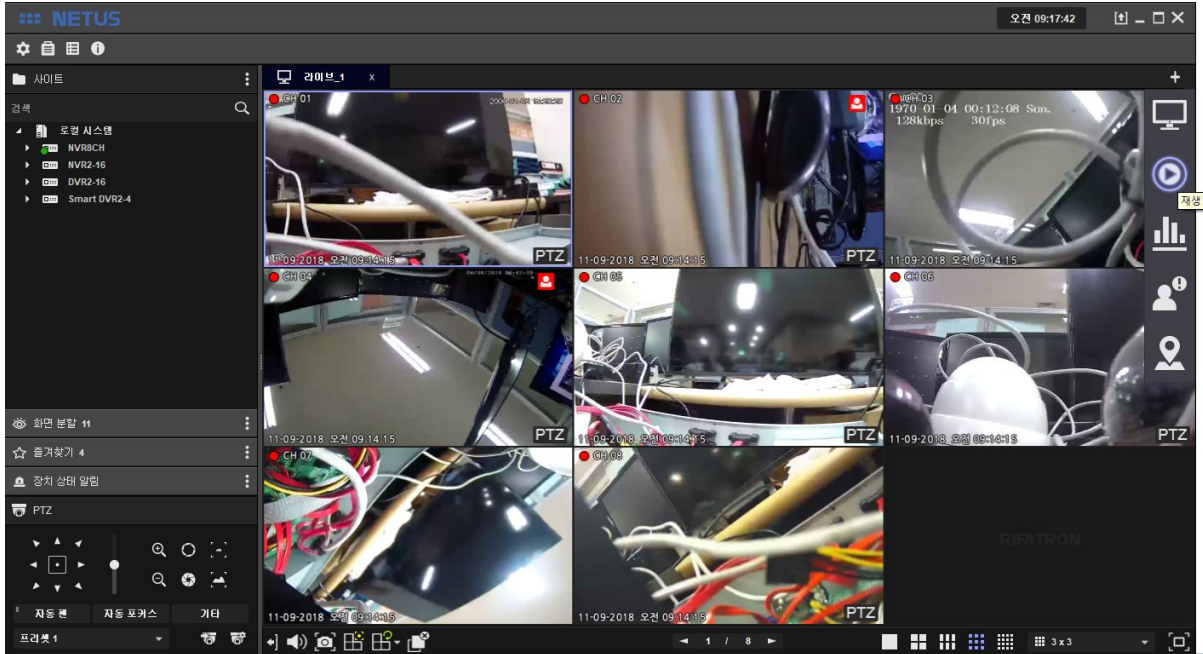
Click 'ADD FAVORITE' and put the name you want.

Settings are applied after click 'Apply'.

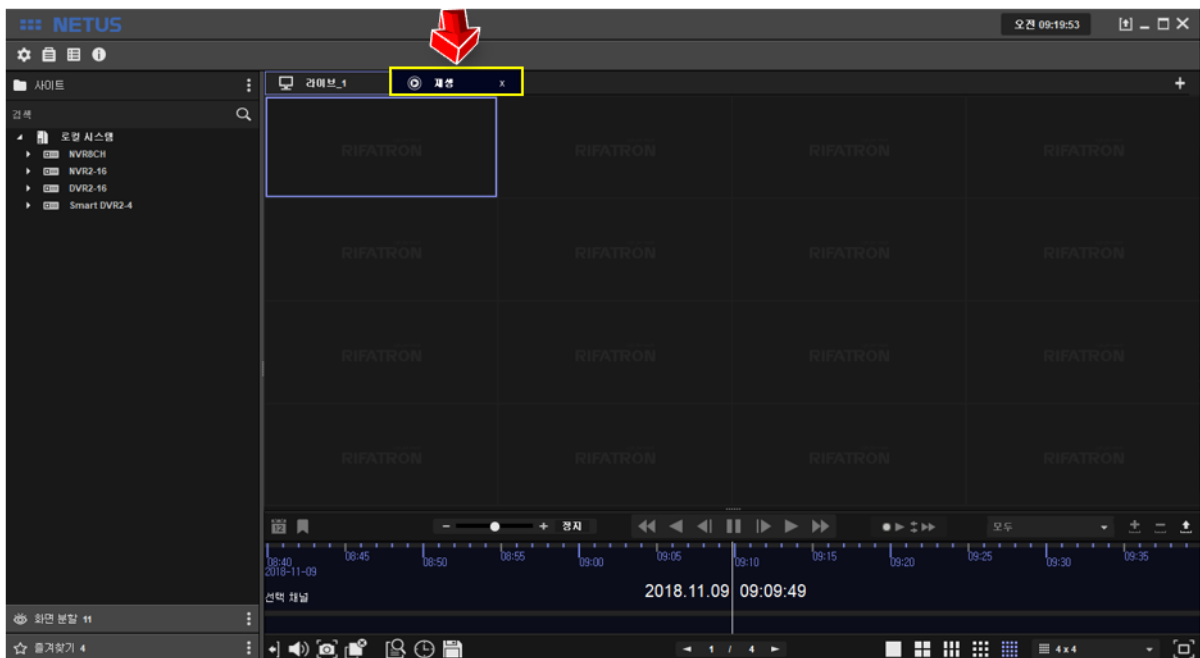


## 7. Playback

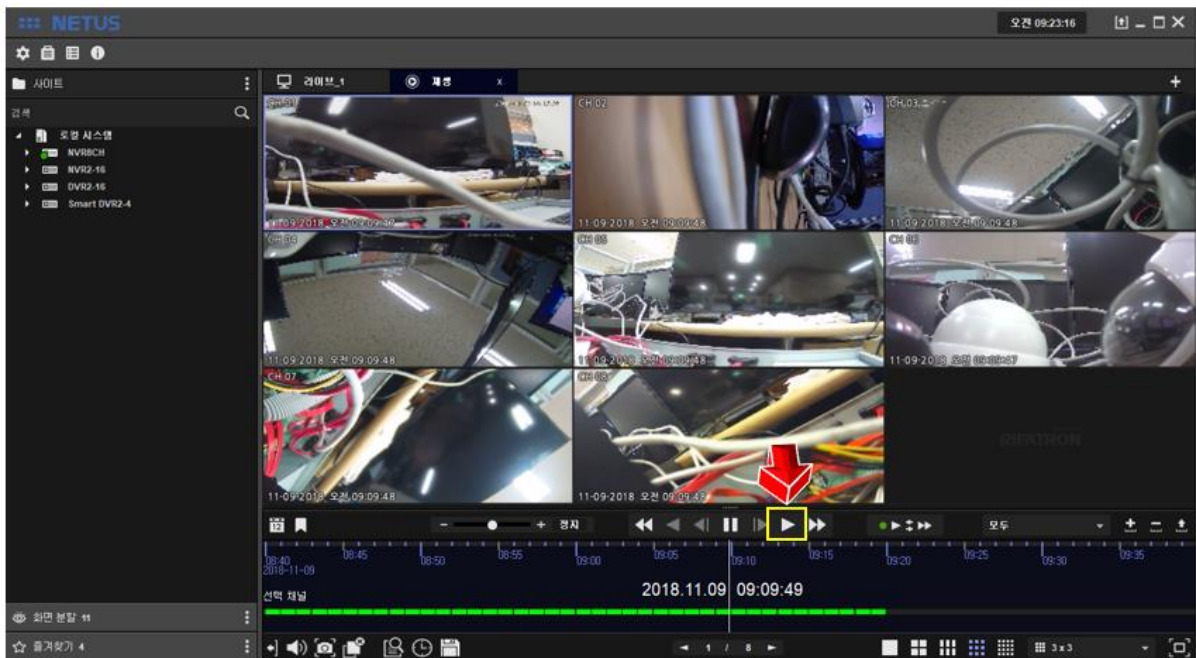
Click  button on the right side and click play button .



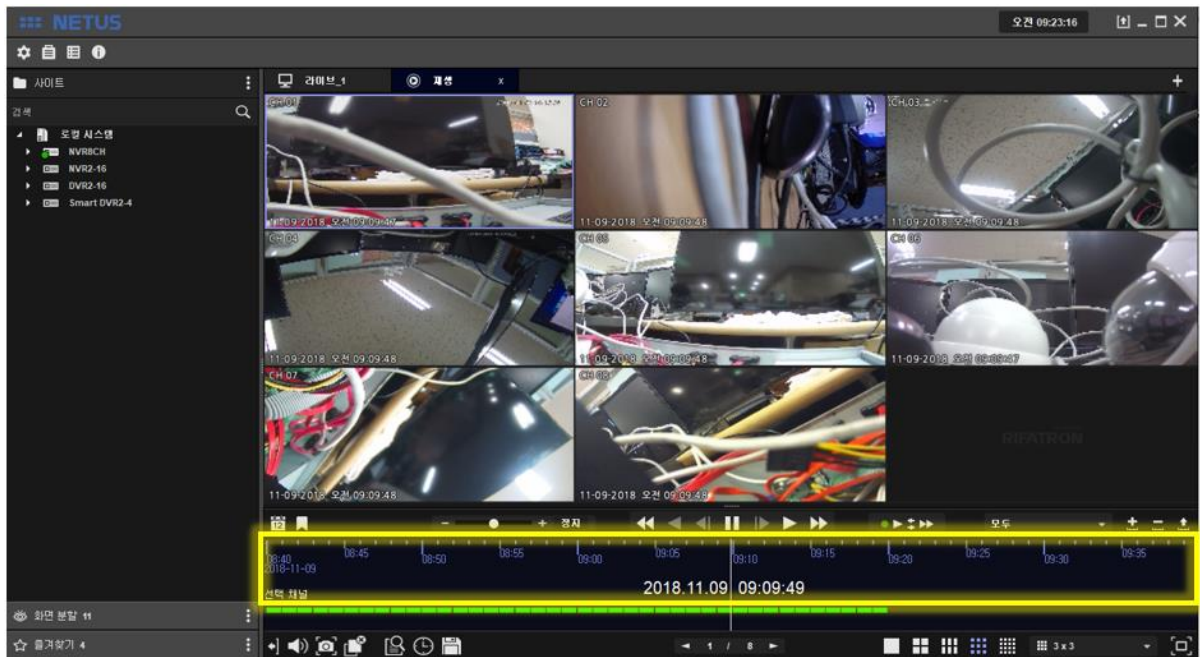
'Playback' tab comes out as below.



Drag devices to the right side (playback tab) in the same way as 'Live display' and click play button to play video.

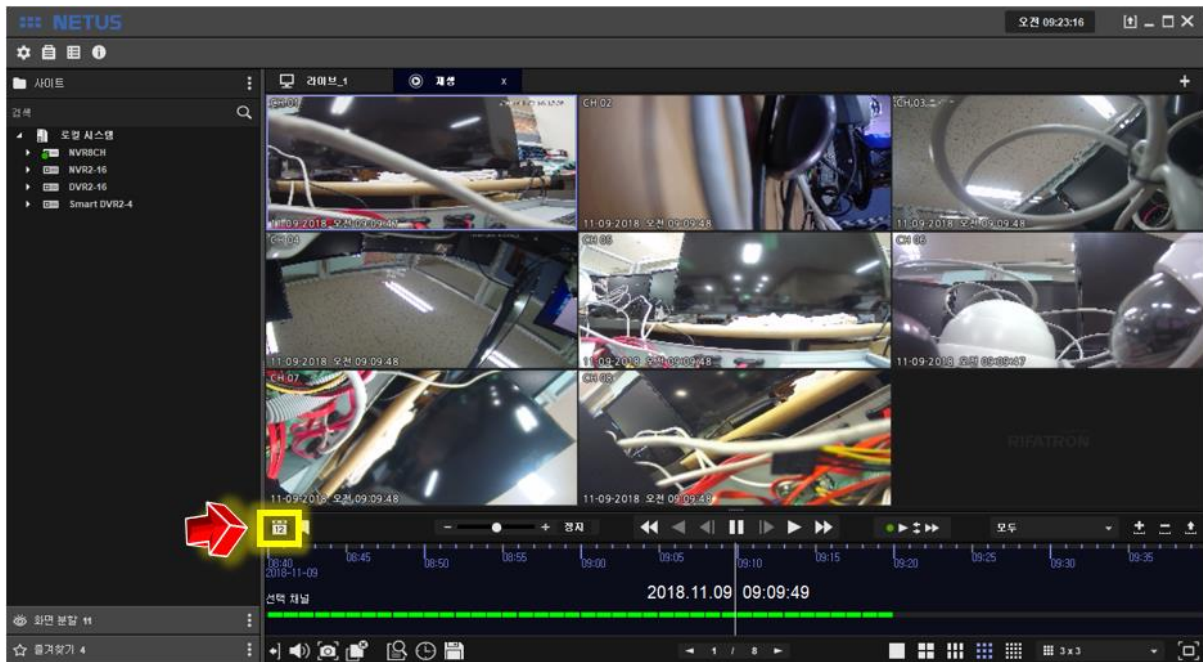


Click the mouse in the yellow area below and drag left & right, then the video can do playback.





You can search the calendar with the yellow marked button below.




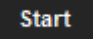
Calendar will be displayed once you click the calendar button



July		2018				
Sun	Mon	Tue	Wed	Thu	Fri	Sat
24	25	26	27	28	29	30
1	2	3	4	5	6	7
8	9	10	11	12	13	14
15	16	17	18	19	20	21
22	23	24	25	26	27	28
29	30	31	1	2	3	4

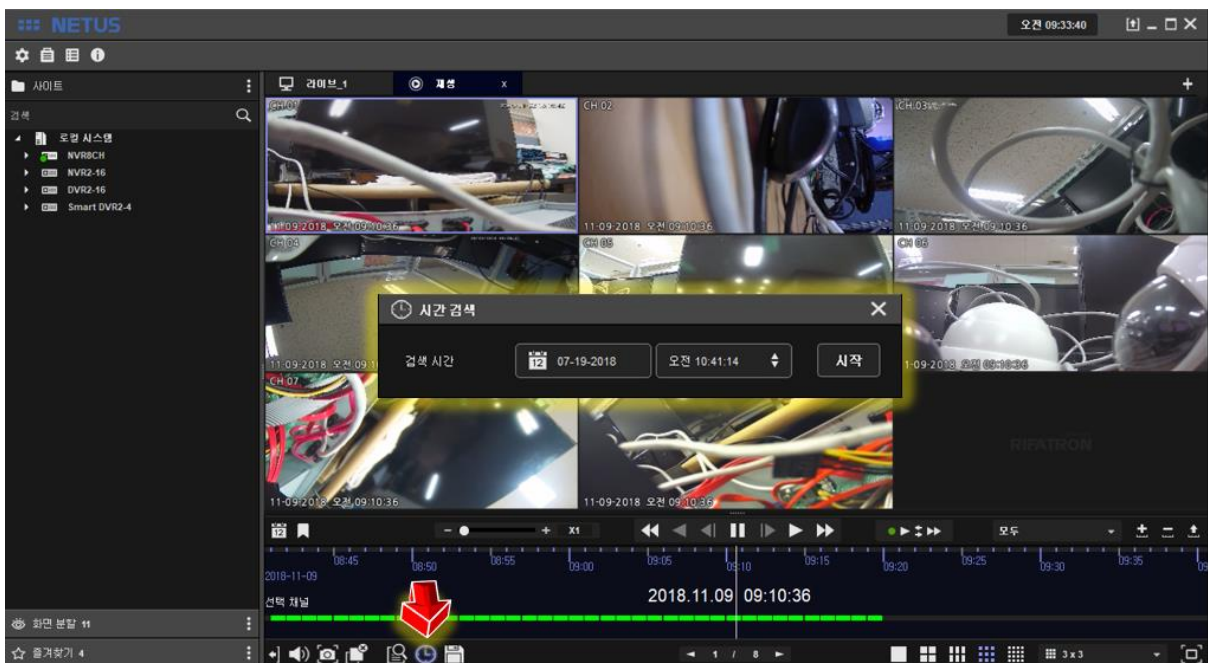



Green mark means there is recording data.

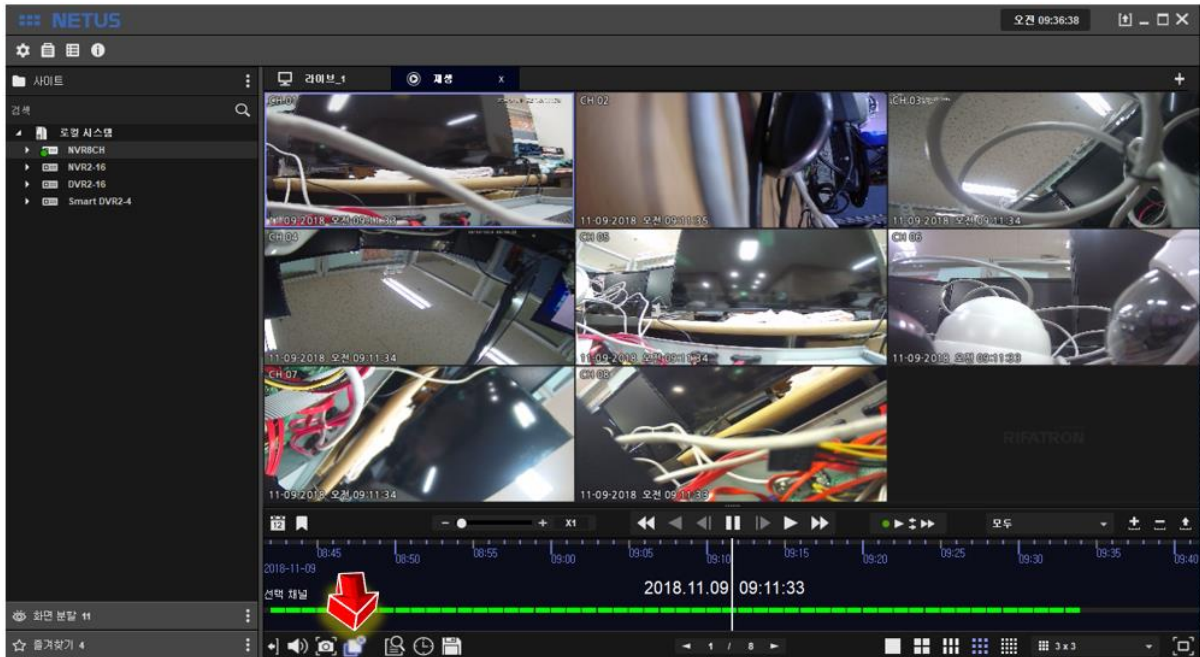
Event search window will be displayed once you click the event search button . Select Event you want to play and click 'start button' . Then particular time you selected will be played.




You can do playback by using 'time search' as well.



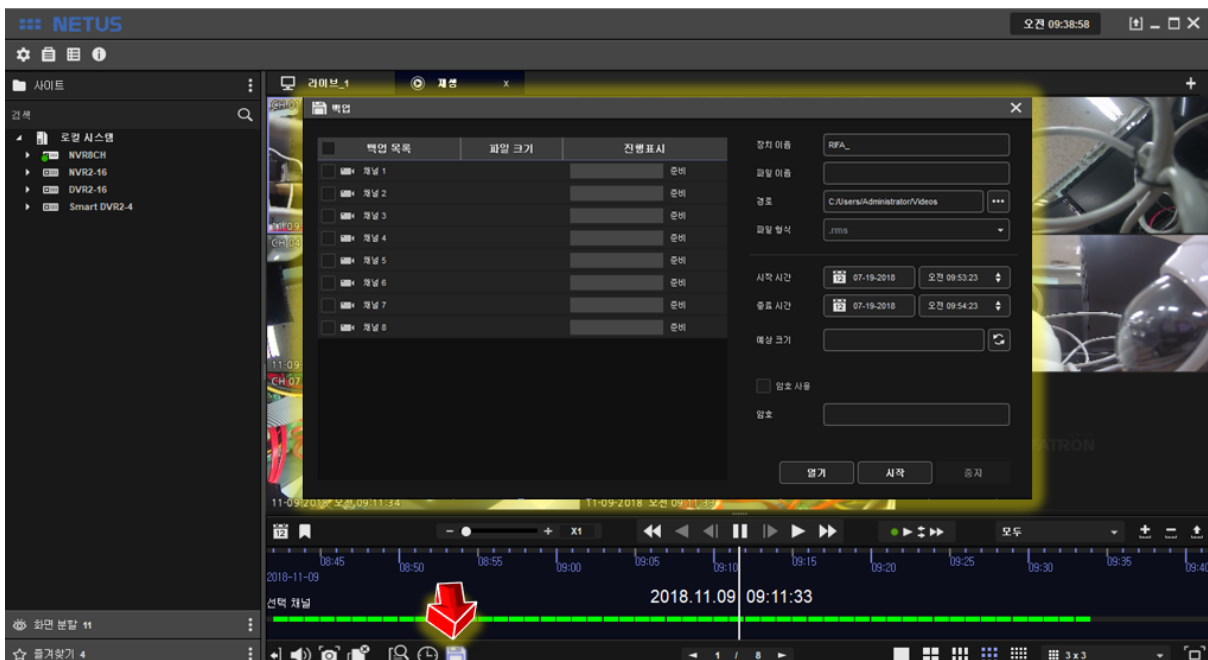
You can stop playback with 'Display Off button' .



## 8. Backup

Backup window comes out once you click the backup button  at playback tap as below.

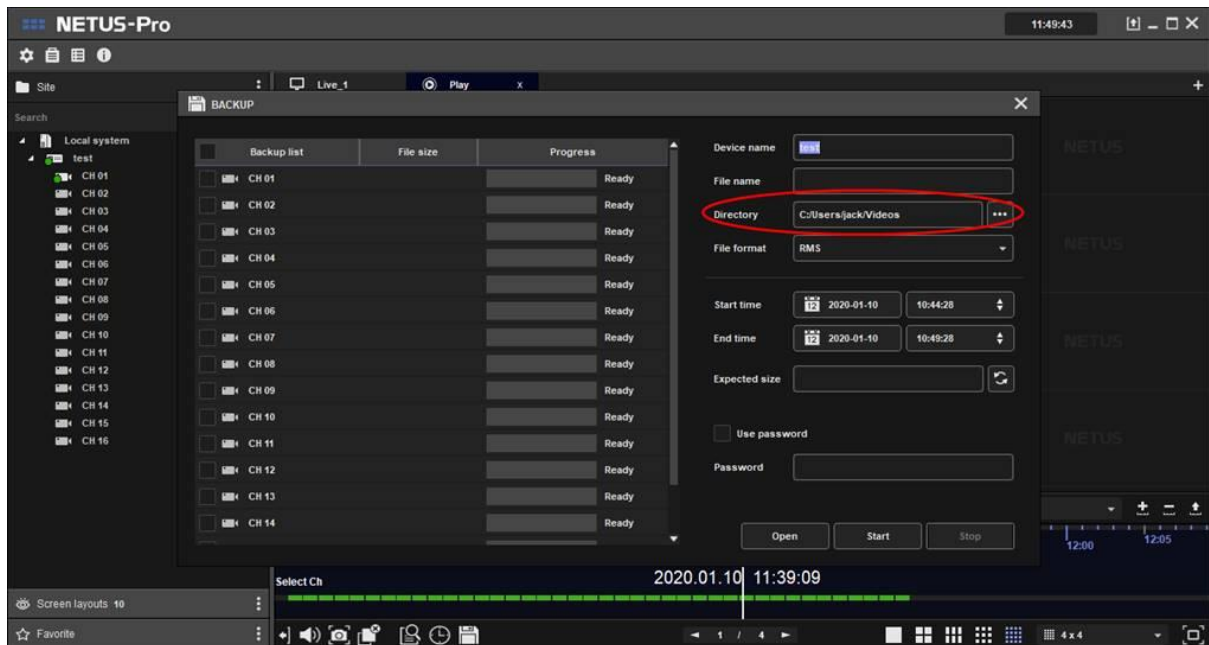
You can proceed backup with it.



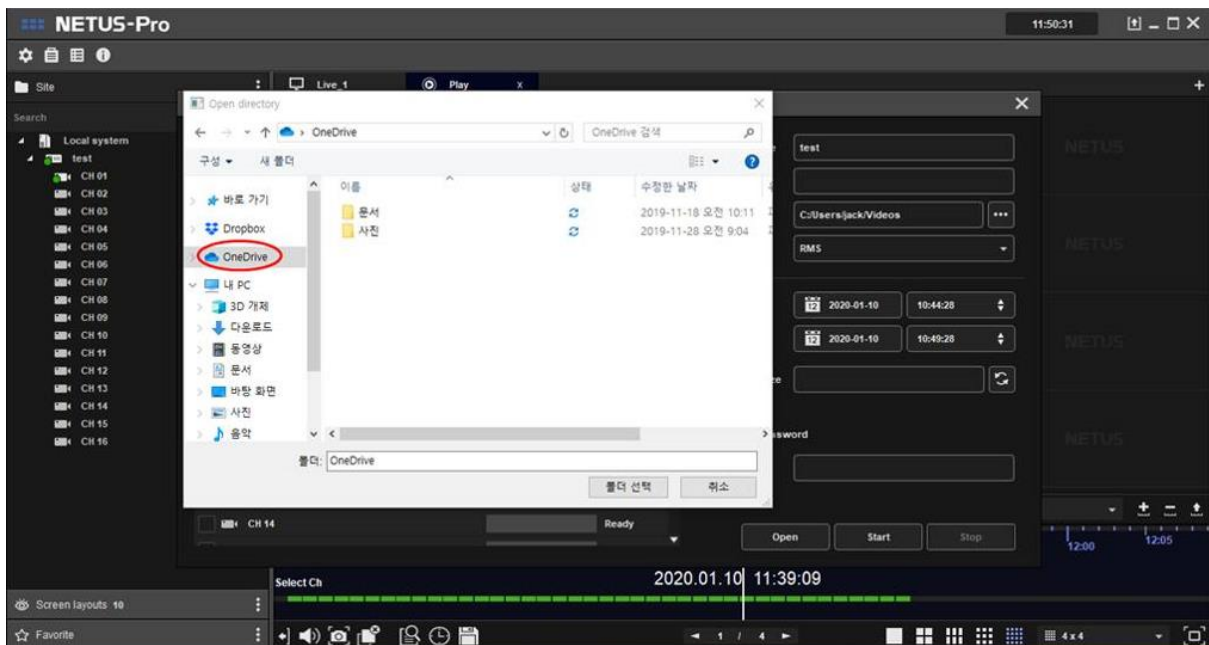
## 9. Backup to Cloud server (Directly)

It's also possible to back up the data to cloud server directly. (Google one-drive, drop-box, etc)


- Step 1. Click 'Directory' button to specify the location of server.

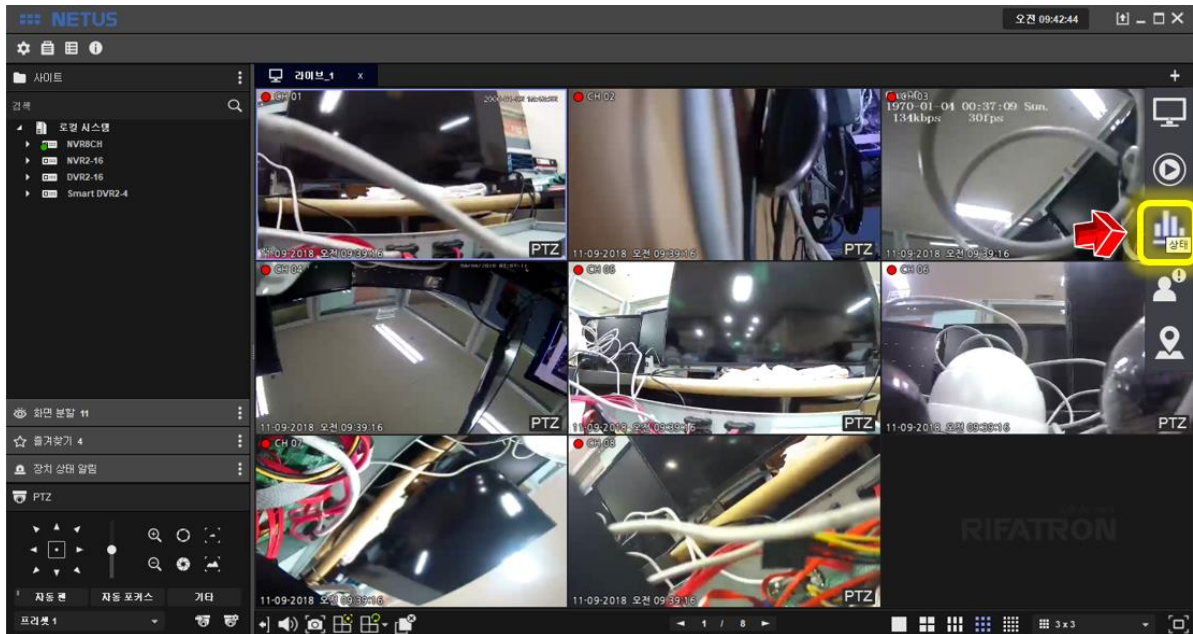


- Step 2. Specify the location of cloud server's folder on your PC (ex. Google one-drive in picture).



## 10. System Status


Click status button 



It shows the status of PC where the current NETUS-Pro is installed.




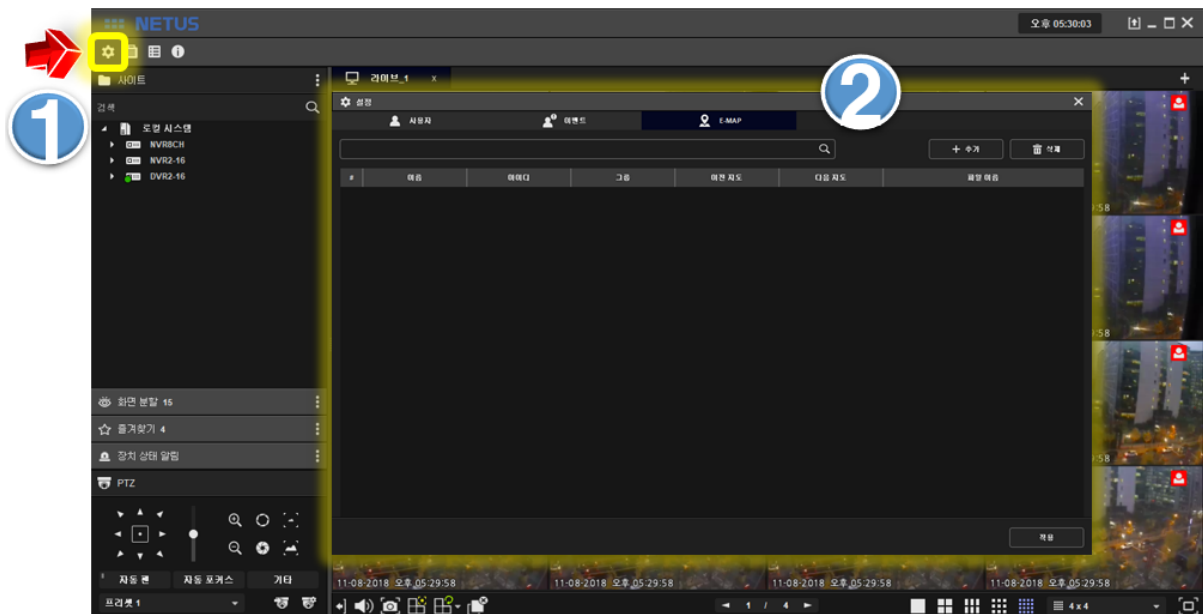
You can check the name, address, channels, resolution, HDD status, FPS, KBPS, recording, network status and detailed information of each registered device.



You can check the detailed information as below once you click the  button at the right side.

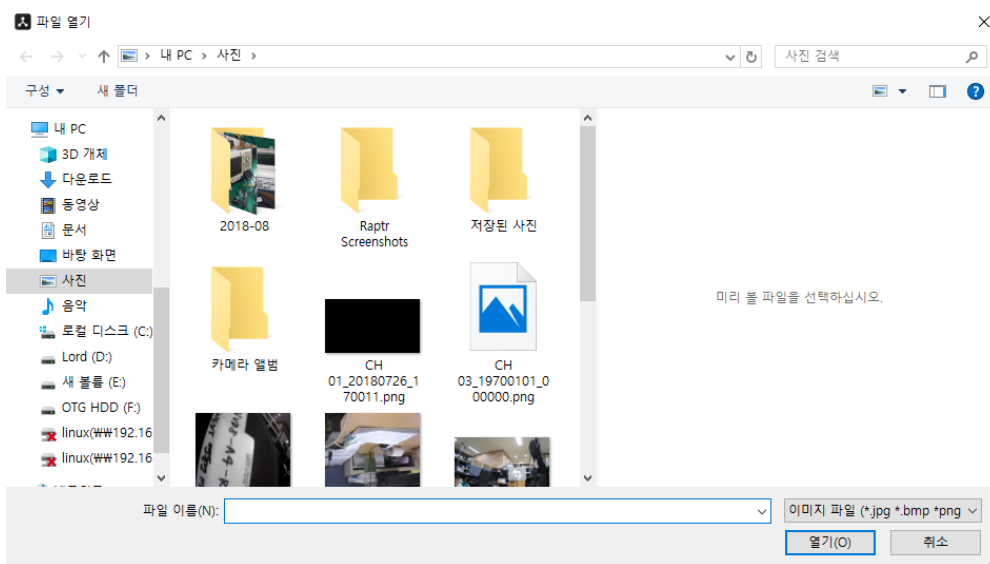
범주	상태
장치 모델	H6 DVR, NVR
장치 이름	REC_000C280B7C61
고유식별자	192.168.10.48, 000C280B7C61
최대 채널	24
해상도	-
NTSC/PAL	NTSC
HDD(GB)	122/2000, 6.1% (10-29-2018 , 11-01-2018), 덮어쓰기
녹화	네
DSP	켜짐
권	켜짐
하드웨어	켜짐
온도	켜짐

## 11. E-MAP

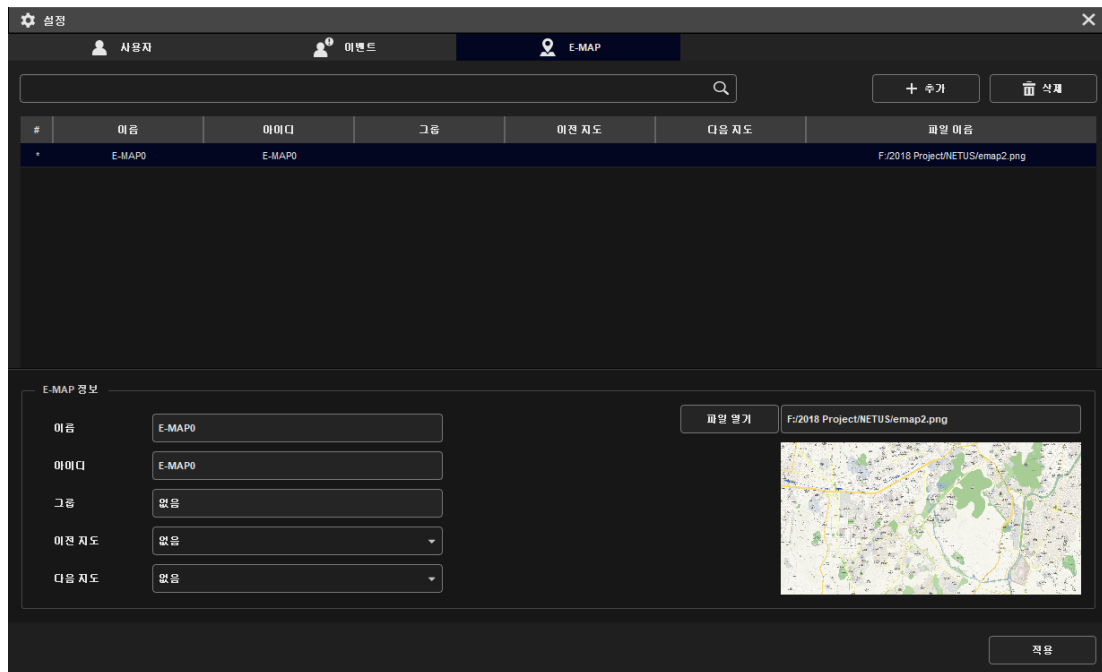
Add image for E-MAP. Click setting button  and set up the E-MAP tab.



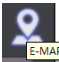
Click the 'Add' button  and then click 'Open file' button  for selecting image.

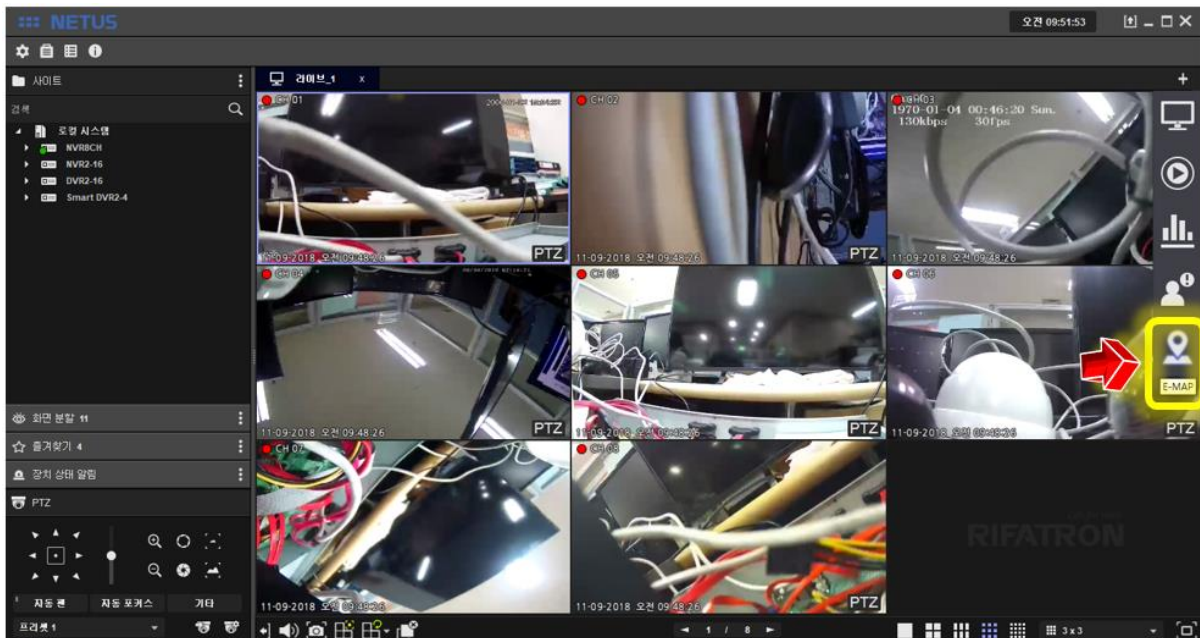


Click 'Apply' button at bottom. Now selecting the map for E-MAP has been completed.



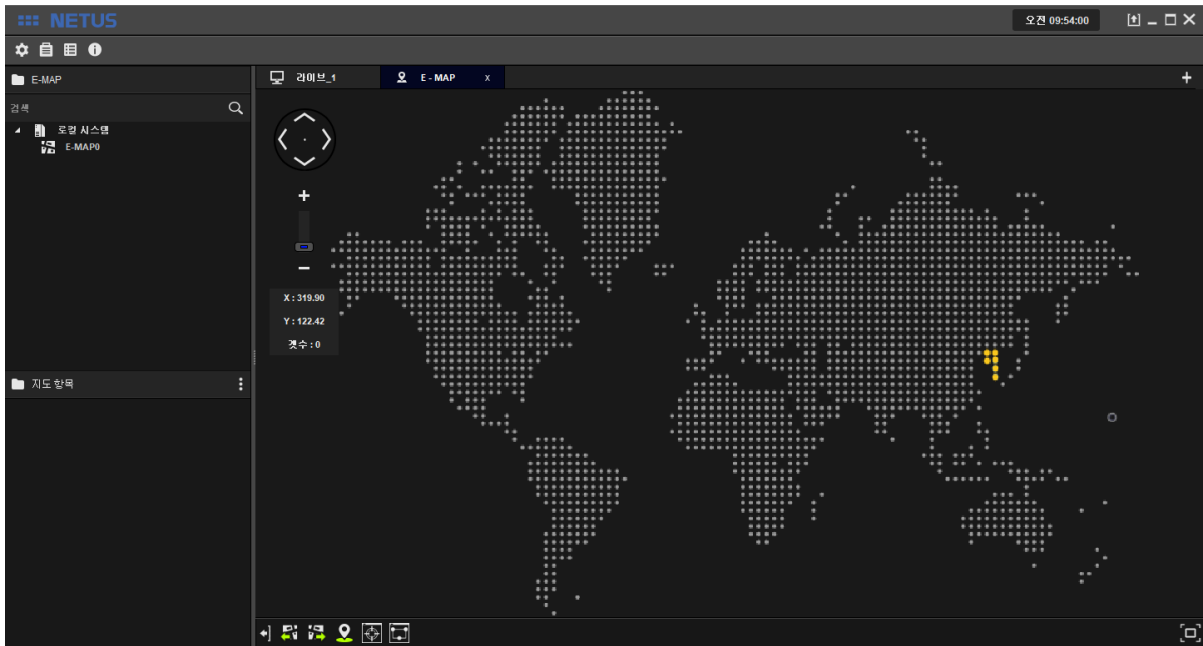
Followings are the steps to compose E-MAP.

Click  button.

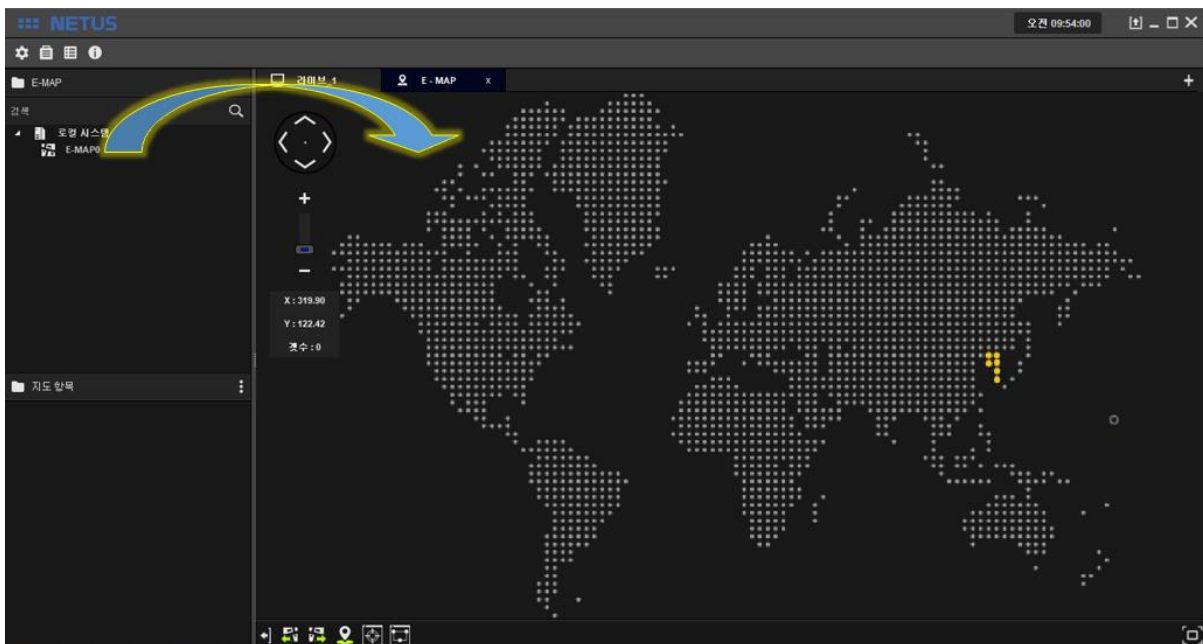




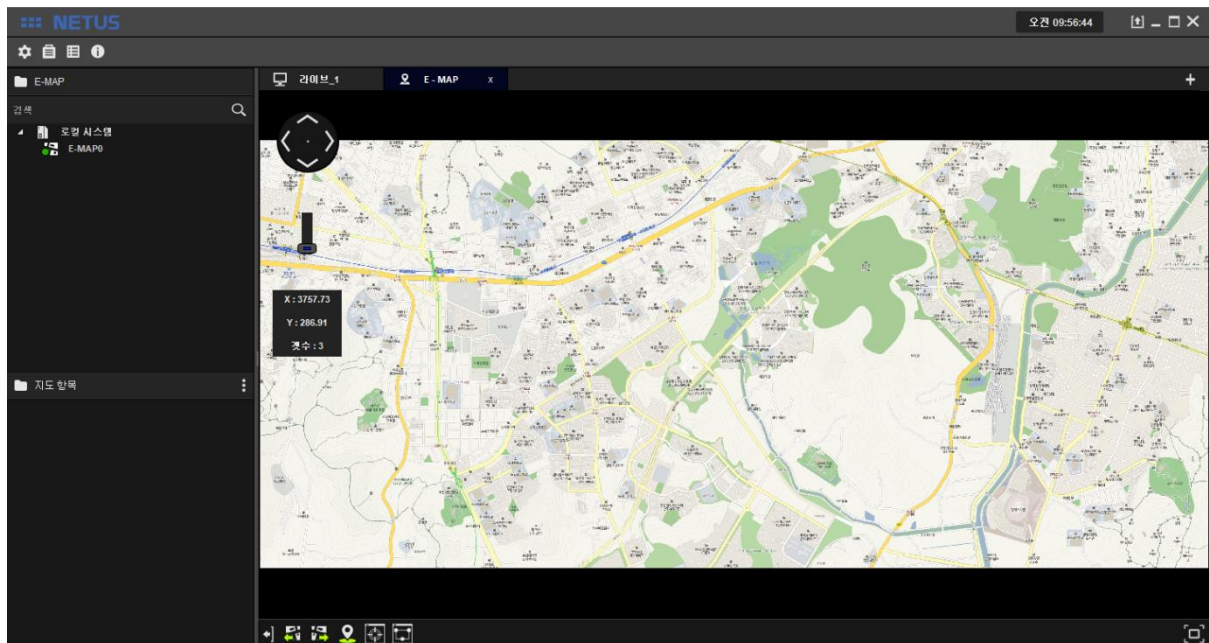
Then the window will be displayed as below.



Drag the map image from the left side menu to E-MAP tap.

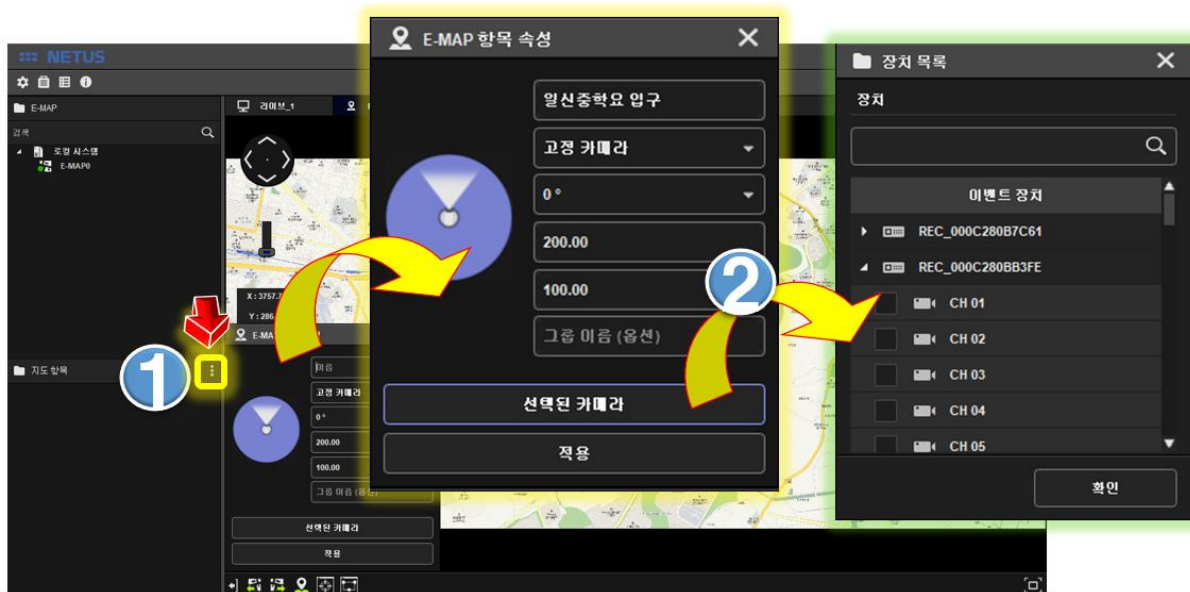


Adjust image as you want with zoom in/out the map.



Click 'Add E-MAP button' **1** then E-MAP item property window will come out.

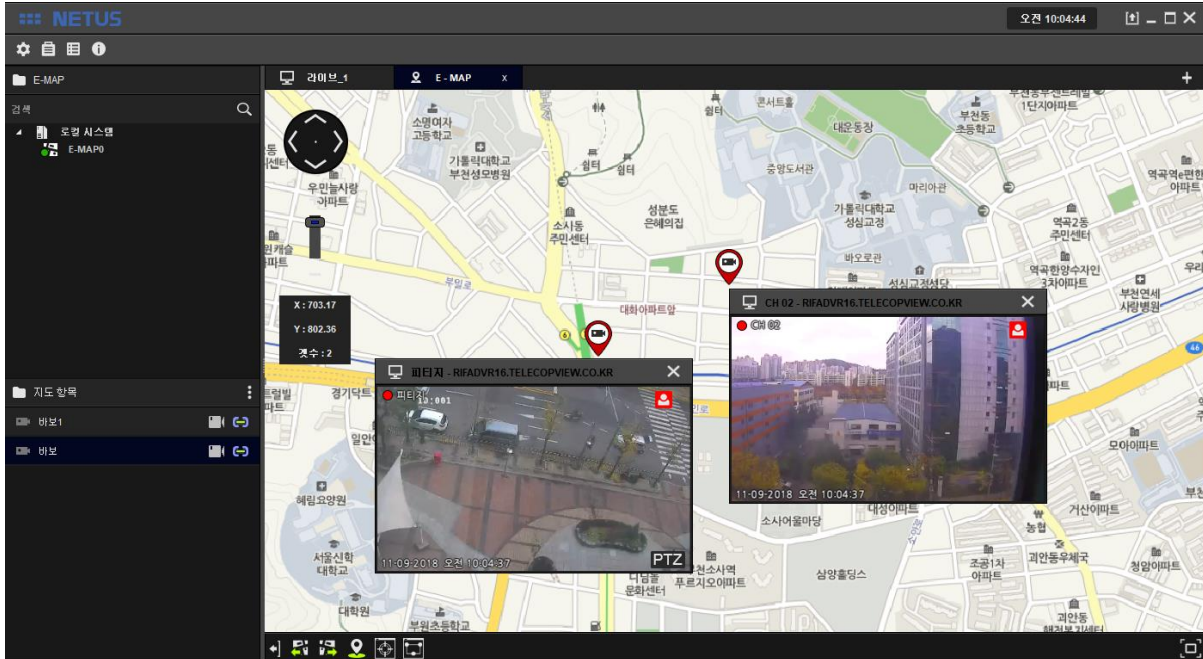
Fill in the name and settings to be displayed in E-MAP. You can select the camera to be connected to this name like number 2 **2** once you click the selected camera



Select the camera and click OK button.

You can see the video once camera is added to left side tab.

You can set a number of cameras.



**Thank you**